



Matrix IP
Rainscreen Cladding System

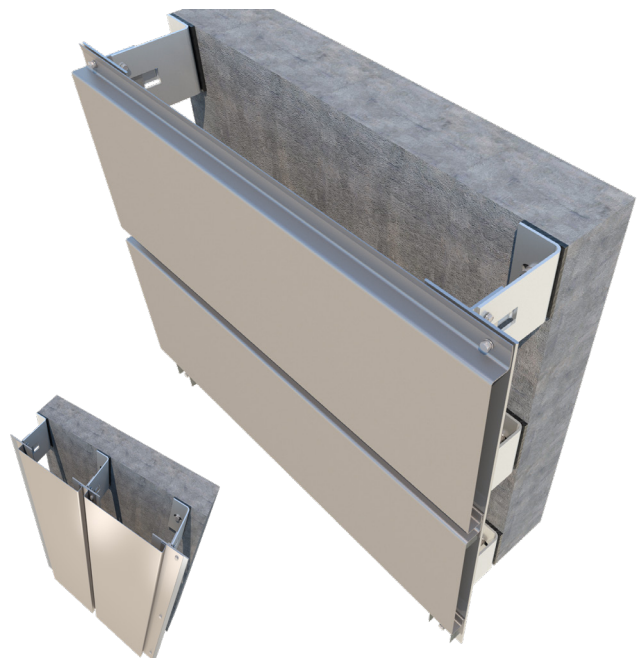
Providing a visually stylish solution for almost any building – PSP Architectural design and manufacture a comprehensive range of integrated metal rainscreen facade systems that can be tailored to meet specific client needs.

Developed to provide a single skin panel system at an economical price, our Matrix IP rainscreen cladding system is based on narrow face widths which can be laid vertically or horizontally. Rigorously tested and approved by the Centre for Window & Cladding Technology (CWCT), this cladding system continues to be an extremely popular choice and achieves a truly outstanding facade solution that meets all aesthetic and technical requirements.



QUICK FACTS:

- Fully tested and accredited to CWCT standards
- Range of A1 & A2 rated materials
- Fully drained & ventilated
- Match any RAL colour
- Laid vertically or horizontally
- Available in long lengths
- Lightweight
- Rapid installation times
- Cost effective



The Matrix IP system can be roll formed or CNC pressed. Panels are manufactured with an external skin of a light gauge material such as COR-TEN®, aluminium or zinc and these are generally supplied as 0.8-2mm thick, but this is dictated by the material used.

Fast installation is achieved by stacking panels where they interlock and are fixed directly back to a secondary steel frame via PSP's T Rail secondary support system. The T Rail system is probably our most popular fixing solution. Brackets are

manufactured in-house accommodating most cavity depths.

The rails are fitted vertically and are best utilised where panels are horizontally laid however the flexible design ensures it can accommodate vertical Matrix IP planks.

Special features, pressings and louvers can be manufactured from the same material ensuring complete synergy. Thermal movement is accommodated via slotted holes or floating clips.

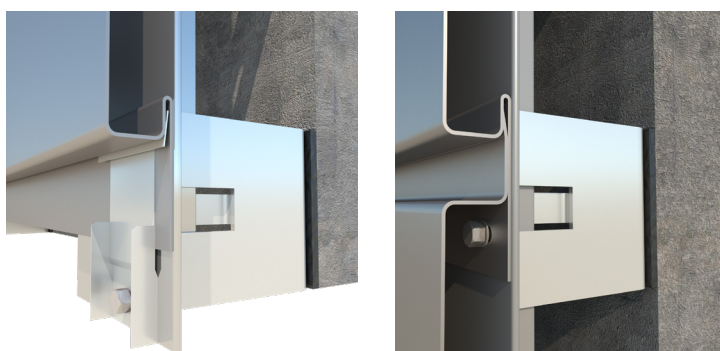
TECHNICAL DETAIL:**Fire Rated Materials and Finishes:**

Solid aluminium | A2 rated non-combustible classified zinc such as Pigmento | Post powder coated classified as A2 fire rated | Pre-coated classified as A1 or A2 fire rated | Anodised aluminium classified as A1 rated

Visible Material Face (Outer Skin):

COR-TEN® (max thickness 0.8mm) | aluminium (max thickness 2mm) | zinc (max thickness 1.5mm)

Finish: Pre/post painting or anodised - ensuring they meet rigorous industry standards and are resilient to extreme weather conditions

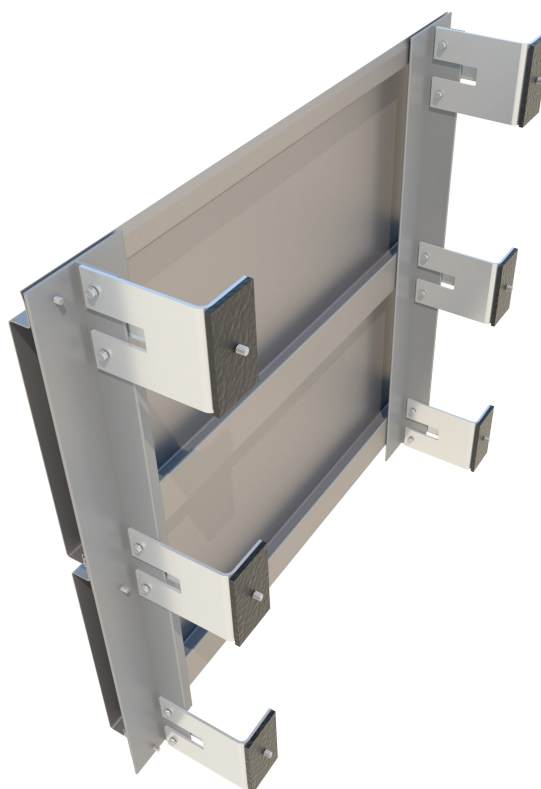


Fixing: Clip or slotted

Support: PSP Matrix T Grid system

Joints: Nominal 5-20mm vertical and horizontal joints

Ancillaries: Fixings to enable connection between cleat and mullion and panel to mullion by PSP. Main fix from bracket to structure will be done by installers

**Further Information:**

Standard details are available to download online for vertical and horizontal interlocking panels.

www.pspuk.com

PSP Group

Bespoke Full Envelope Solutions

Founded in 1998 - PSP Architectural specialise in the manufacture of high quality rainscreen cladding systems and custom-made fabrications. More recently PSP has expanded and evolved our services to provide a single point of procurement for bespoke full envelope solutions.

PSP ALUMINIUM

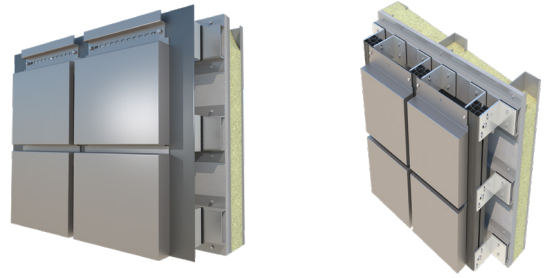
In 2014 we set up PSP Aluminium which specialises in the manufacture of curtain walling, windows and doors to the highest levels of reliability and quality. The 25,000ft² premises neighbours the architectural facility which allows us to manufacture and supply for an entire building envelope. All PSP Aluminium systems integrate fully with any PSP Architectural Matrix rainscreen panels.

PSP DESIGN

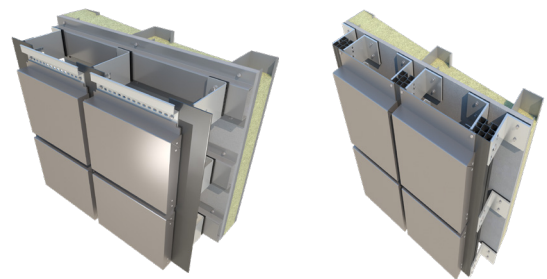
To ensure quality throughout the process, we launched PSP Design in 2016, which allows us to take full responsibility for the design, manufacture and supply of the full external facade. This single point of procurement, managed by our internal quality control systems, brings complete synergy throughout the supply chain - allowing us to deliver a complete full-service solution.

Other PSP rainscreen cladding systems in the Matrix range include:

MATRIX SF & SFM



MATRIX SFC & SFCM



MATRIX MOSAIC



PSP Group

Unit 11 | All Saints Industrial Estate
Shildon | County Durham | DL4 2RD
T: 01388 770490

www.pspuk.com

