

Matrix Mosaic
Rainscreen Cladding System

A facade can make or break a building's standing in the community and the external building envelope not only act as an external barrier between the inside and the outside but can also play a huge role in creating stand out and appeal.

Utilising specialist machinery, PSP can produce customised patterns or perforations on panels to incorporate bespoke aesthetic designs to suit clients exacting requirements. Cladding panels can be personalised to emulate local natural landmarks, pay tribute to the area's heritage or simply depict the building's use or occupants within.



QUICK FACTS:

- Personalisation applied to panels
- A1 & A2 fire rated material
- Quick and easy installation to backing structure
- Allows for both floor and thermal movements
- Panels can be manufactured in lengths up to 6m
- Wide colour and finish choice, including PPC and anodised



We acknowledge that all clients require bespoke facade solutions that are tailored to their individual needs, which is why each of our products are designed with the client in mind. Matrix Mosaic was developed to offer personalisation to external cladding panels and this is achieved by working with the architect and transforming their DWG files into reality.

Matrix Mosaic panels are manufactured on our CNC machines offering high tolerances and sharp folds.

Available in a range of finishes and thicknesses,

this system can be manufactured with fire rated cores and is ideal for providing bespoke panels in large format modular grids.

The Matrix range of rainscreen cladding systems have been tested by the Centre for Window & Cladding Technology (CWCT) to ensure they meet rigorous industry standards and are resilient to extreme weather conditions.

Matrix Mosaic can be manufactured from numerous non-combustible materials and finishes guaranteeing the external envelope is compliant and safe but also aesthetically appealing.

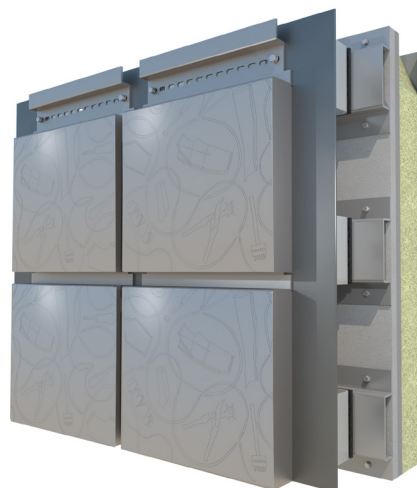


TECHNICAL DETAIL:

Fire Rated Materials and Finishes:

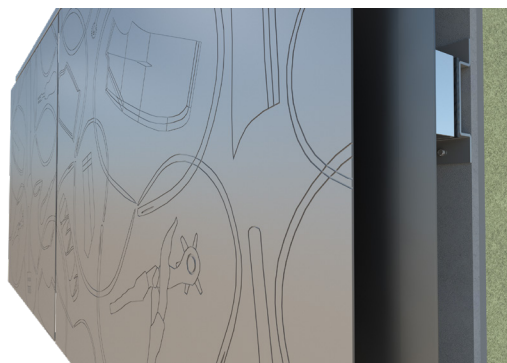
Post powder coated classified A2 fire rated | Anodised aluminium classified as non-combustible

Fixing: Secret / discreet fix method



Joints: Bespoke joints to suit project

Support: PSP Matrix T Grid system or bespoke



Ancillaries: Fixings to enable connection between brackets and rail and panel to rail by PSP. Main fix from bracket to structure will be done by others



Further Information:

Standard details for Matrix Mosaic are available to download online.

www.pspuk.com

PSP Group

Bespoke Full Envelope Solutions

Founded in 1998 - PSP Architectural specialise in the manufacture of high quality rainscreen cladding systems and custom-made fabrications. More recently PSP has expanded and evolved our services to provide a single point of procurement for bespoke full envelope solutions.

PSP ALUMINIUM

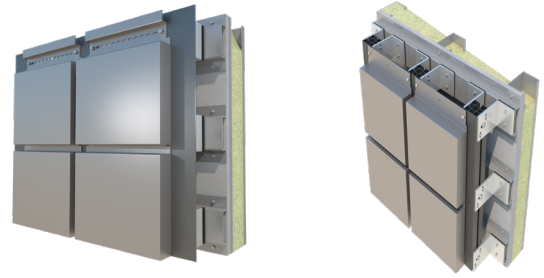
In 2014 we set up PSP Aluminium which specialises in the manufacture of curtain walling, windows and doors to the highest levels of reliability and quality. The 25,000ft² premises neighbours the architectural facility which allows us to manufacture and supply for an entire building envelope. All PSP Aluminium systems integrate fully with any PSP Architectural Matrix rainscreen panels.

PSP DESIGN

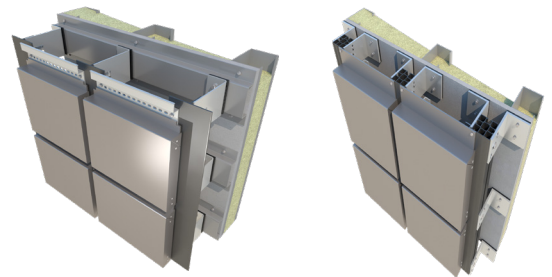
To ensure quality throughout the process, we launched PSP Design in 2016, which allows us to take full responsibility for the design, manufacture and supply of the full external facade. This single point of procurement, managed by our internal quality control systems, brings complete synergy throughout the supply chain - allowing us to deliver a complete full-service solution.

Other PSP rainscreen cladding systems in the Matrix range include:

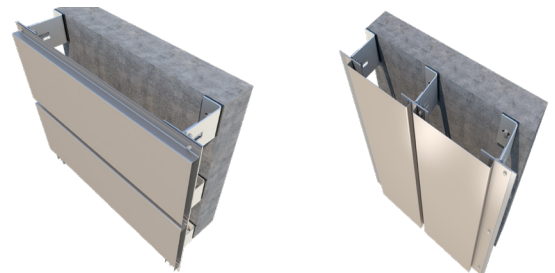
MATRIX SF & SFM



MATRIX SFC & SFCM



MATRIX IPH & IPV



PSP Group

Unit 11 | All Saints Industrial Estate
Shildon | County Durham | DL4 2RD
T: 01388 770490

www.pspuk.com

