



Matrix SF & SFM
Rainscreen Cladding Systems

Matrix SF and Matrix SFM rainscreen cladding systems have been tested by the Centre for Window & Cladding Technology (CWCT) to ensure they meet rigorous industry standards and are resilient to extreme weather conditions.

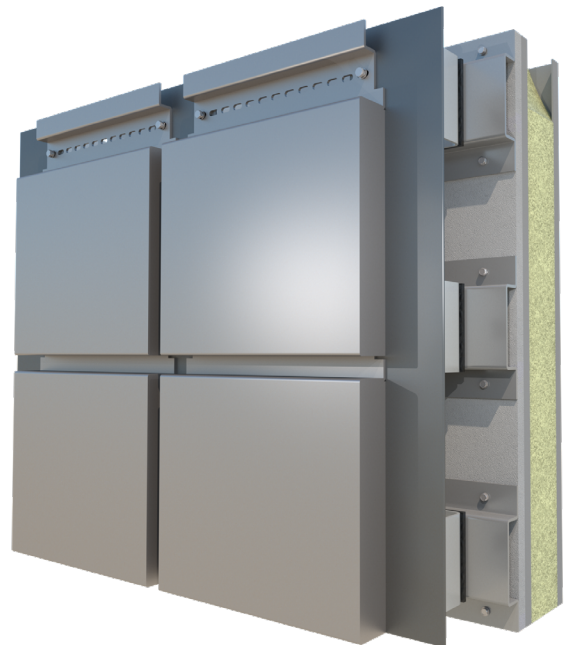
Matrix SF is a high tolerance fabricated panel system which can be manufactured in lengths up to six metres and generally supplied as 2-3mm thick, but this is dictated by the material used. The cladding system is available in a range of materials such as COR-TEN®, stainless steel and aluminium.

Matrix SFM is based on Matrix SF but includes mullions for structural support.



QUICK FACTS:

- Fully tested and accredited to CWCT standards
- A1 & A2 fire rated material
- Quick and easy installation to backing structure
- Allows for both floor and thermal movements
- Panels can be manufactured in lengths up to 6m
- Available in a range of materials/colours/finishes



These rainscreen facade systems provide an aesthetically pleasing external envelope solution whilst also offering rapid installation times.

This innovative cladding range is ideal for integrating perforations into the panels, which can form designs featuring anything from uniform lines to random patterns or pictures.

Special features include pressings and louvers which can be manufactured to match to the panels.

The most suitable type of secondary support

structure is generally dictated by the panel orientation along with the ability to incorporate thermal and floor movements where required.

PSP's standard rainscreen systems are fully drained and ventilated which means they are designed to allow ventilation and drainage to the panel/wall cavity – in line with recognised rainscreen principles.

Our well-designed panels allow airflow through the cavity to assist with water removal which then drains out at the base and also allow for both floor and thermal movement.



TECHNICAL DETAIL:

Fire Rated Materials and Finishes:

Solid aluminium classified as non-combustible | Solid zinc classified as non-combustible | Post powder coated classified A2 fire rated | Pre-coated classified A1 fire rated | Anodised aluminium classified as non-combustible

Visible Material Face:

COR-TEN®, stainless steel or pre-coated aluminium

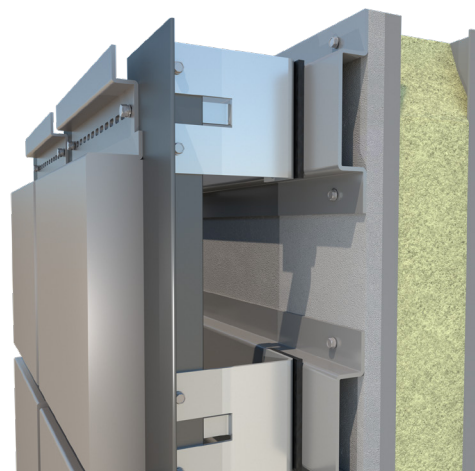
Finish: PSP offer many different finishes dependent upon material used

Fixing: Secret / discreet fix method

Joints: Nominal 20mm vertical and horizontal joints

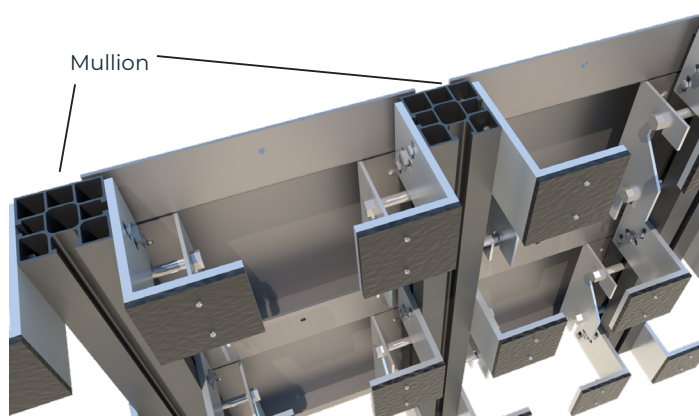
Support for SF: PSP Matrix T Grid system

Ancillaries for SF: Fixings to enable connection between bracket and rail and panel to rail by PSP. Main fix from bracket to structure will be done by installers



Support for SFM: PSP M60 Hook on Mullion

Ancillaries for SFM: Fixings to enable connection between cleat and mullion and panel to mullion by PSP. Main fix from bracket to structure will be done by installers



Further Information:

Standard details for Matrix SF and Matrix SFM are available to download online.

www.pspuk.com

PSP Group

Bespoke Full Envelope Solutions

Founded in 1998 - PSP Architectural specialise in the manufacture of high quality rainscreen cladding systems and custom-made fabrications. More recently PSP has expanded and evolved our services to provide a single point of procurement for bespoke full envelope solutions.

PSP ALUMINIUM

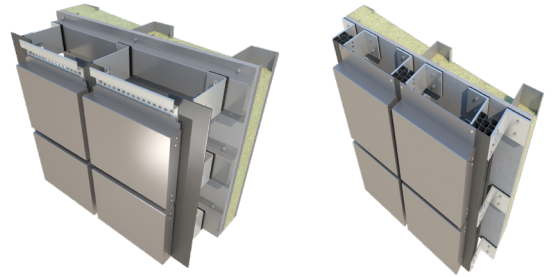
In 2014 we set up PSP Aluminium which specialises in the manufacture of curtain walling, windows and doors to the highest levels of reliability and quality. The 25,000ft² premises neighbours the architectural facility which allows us to manufacture and supply for an entire building envelope. All PSP Aluminium systems integrate fully with any PSP Architectural Matrix rainscreen panels.

PSP DESIGN

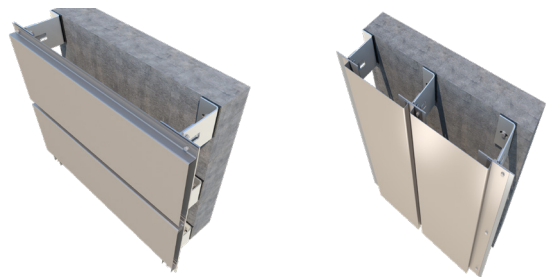
To ensure quality throughout the process, we launched PSP Design in 2016, which allows us to take full responsibility for the design, manufacture and supply of the full external facade. This single point of procurement, managed by our internal quality control systems, brings complete synergy throughout the supply chain - allowing us to deliver a complete full-service solution.

Other PSP rainscreen cladding systems in the Matrix range include:

MATRIX SFC & SFCM



MATRIX IPH & IPV



MATRIX MOSAIC



PSP Group

Unit 11 | All Saints Industrial Estate
Shildon | County Durham | DL4 2RD
T: 01388 770490

www.pspuk.com

