



Matrix SFC & SFCM
Rainscreen Cladding Systems

Architects require aesthetically pleasing cladding solutions and our Matrix SFC and Matrix SFCM rainscreen systems provide the flexibility and finishes to achieve a truly outstanding facade solution that meet all aesthetic and technical requirements.

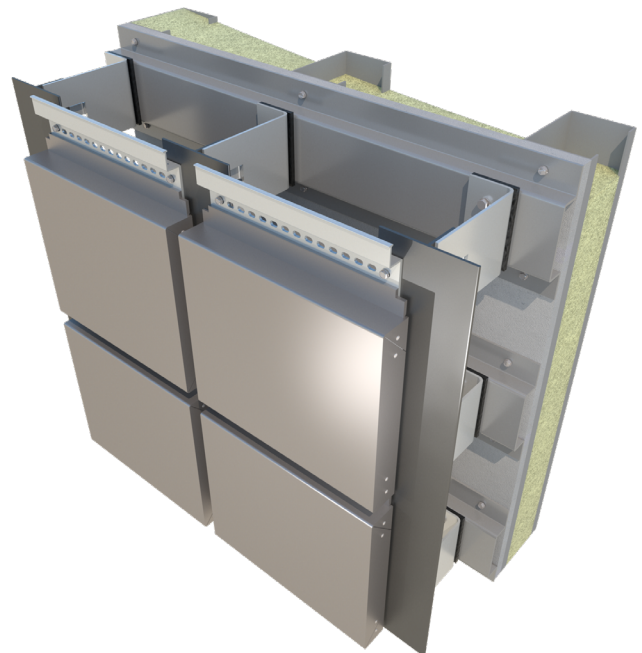
Matrix SFC rainscreen system is made of pre-coated metal composite materials such as aluminium, zinc, copper and is manufactured on our flatbed CNC machine offering high tolerances and sharp folds.

Matrix SFCM is based on Matrix SFC but includes mullions for structural support.



QUICK FACTS:

- Fully tested and accredited to CWCT standards
- A2 fire rated material
- Quick and easy installation to backing structure
- Allows for both floor and thermal movements
- Panels can be manufactured in lengths up to 6m
- Wide colour and finish choice, including PPC and anodised



Both Matrix SFC and Matrix SFCM rainscreen cladding systems have been tested by the Centre for Window & Cladding Technology (CWCT) and with fire rated cores these rainscreen system are ideal for providing a flat panel in large format modular grids.

The composite panels are made up of a mineral core sandwiched between two skins of 0.5mm thick aluminium alloy.

PSP stock a range of composite materials in various colours and finishes and also a number of different effects such as marble and wood grain.

Our vast network of suppliers built over the last 20 years ensures we can respond to any design aspiration and source special finishes to turn an architectural concept into an exceptional engineering reality.

The most suitable type of secondary support structure is generally dictated by the panel orientation along with the ability to incorporate thermal and floor movements where required.

Matrix SFC and Matrix SFCM are available with special features including pressings and louvers, which can be manufactured to match the panels.

TECHNICAL DETAIL:**Visible Material Face (Outer Skin):**

Aluminium Composite Material - classified A2 rated

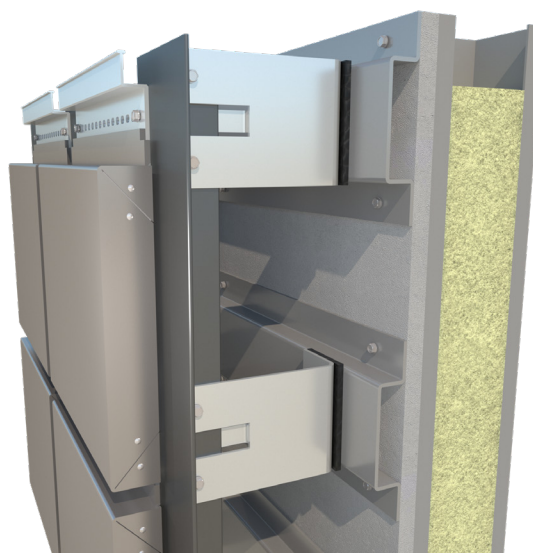
Finish: PSP offer many different finishes through the use of various suppliers

Fixing: Secret / discreet fix method

Joints: Nominal 20mm vertical and horizontal joints

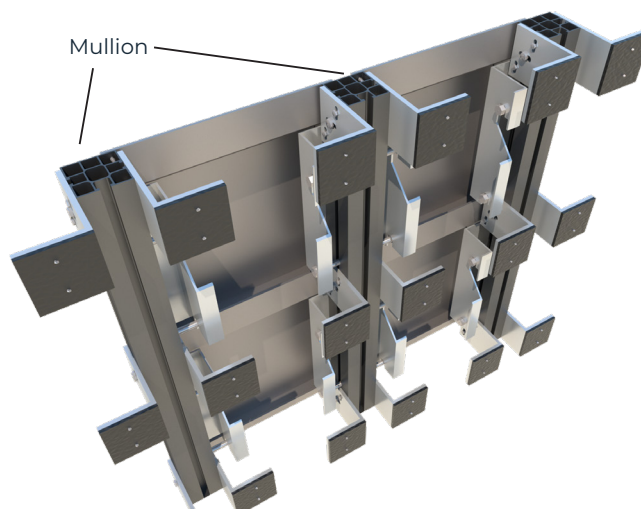
Support for SFC: PSP Matrix T Grid system

Ancillaries for SFC: Fixings to enable connection between bracket and rail and panel to rail by PSP. Main fix from bracket to structure will be done by others



Support for SFCM: PSP M60 Hook on Mullion

Ancillaries for SFCM: Fixings to enable connection between cleat and mullion and panel to mullion by PSP. Main fix from bracket to structure will be done by others

**Further Information:**

Standard details for Matrix SFC and Matrix SFCM are available to download online.

www.pspuk.com



PSP Group

Bespoke Full Envelope Solutions

Founded in 1998 - PSP Architectural specialise in the manufacture of high quality rainscreen cladding systems and custom-made fabrications. More recently PSP has expanded and evolved our services to provide a single point of procurement for bespoke full envelope solutions.

PSP ALUMINIUM

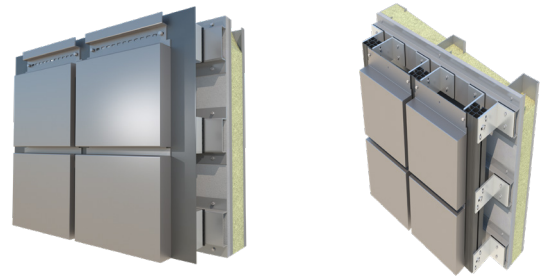
In 2014 we set up PSP Aluminium which specialises in the manufacture of curtain walling, windows and doors to the highest levels of reliability and quality. The 25,000ft² premises neighbours the architectural facility which allows us to manufacture and supply for an entire building envelope. All PSP Aluminium systems integrate fully with any PSP Architectural Matrix rainscreen panels.

PSP DESIGN

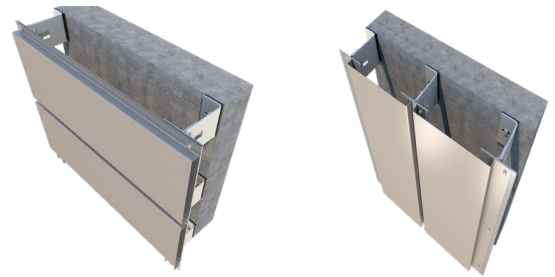
To ensure quality throughout the process, we launched PSP Design in 2016, which allows us to take full responsibility for the design, manufacture and supply of the full external facade. This single point of procurement, managed by our internal quality control systems, brings complete synergy throughout the supply chain - allowing us to deliver a complete full-service solution.

Other PSP rainscreen cladding systems in the Matrix range include:

MATRIX SF & SFM



MATRIX IPH & IPV



MATRIX MOSAIC



PSP Group

Unit 11 | All Saints Industrial Estate
Shildon | County Durham | DL4 2RD
T: 01388 770490

www.pspuk.com

