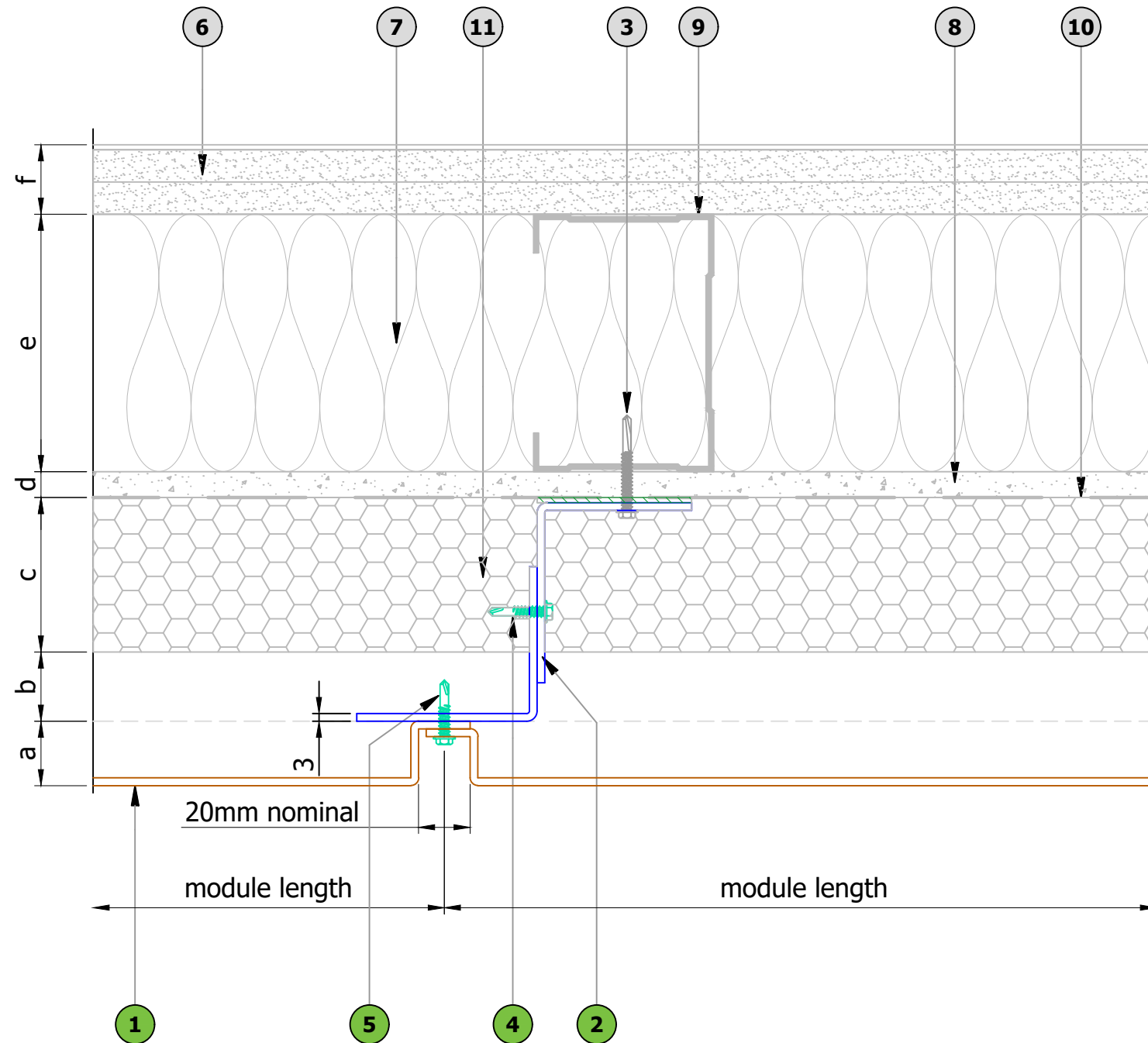


DO NOT SCALE

IF IN DOUBT - ASK



PARTS LIST

1	Aluminium panel skin, Varies
2	Aluminium carrier angles, 3mm thick
3	Stainless steel fixing (By Others)
4	JT4-4-4.8x19 Stainless steel fixing
5	JT4-6-5.5x22 A14 Stainless steel fixing
6	Internal boards (By Others)
7	Insulation (By Others)
8	Cement particle board (By Others)
9	SFS support structure (By Others)
10	Breather membrane (By Others)
11	Additional rigid sheet insulation if required (By Others)
12	Optional Aluminium Flashing
13	Fire/Smoke Barrier and fittings (by Others) - Refer to specialist
14	EPDM (By Others)
15	Thermally Broken Aluminium Profile
16	Adjacent Window / Door Profile
17	External Corner Flashing
18	Fixing Bracket

Refer to Specialist recommendation for all Smoke and Fire protection.

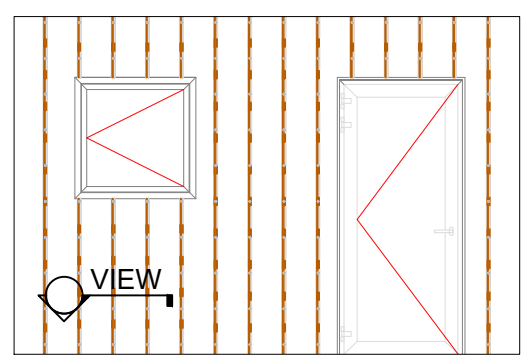
***Caution fire barriers are to be considered.**

LEGEND:

- N → part of system, provided by PSP
- N → not part of system, can be provided by PSP
- N → provided by others


VERTICAL PANEL JOINT DETAIL

LEGEND	
a	PSP Panel thickness - Varies
b	Ventilated cavity (British standard - 25mm, NHBC - 38mm (baffled joints) and 50mm (open joints))
c	Insulation by others (must be Part B Compliant)
d	CP board by others - thickness established by project specification
e	SFS by others - depth established by project specification
f	Internal finishes by others



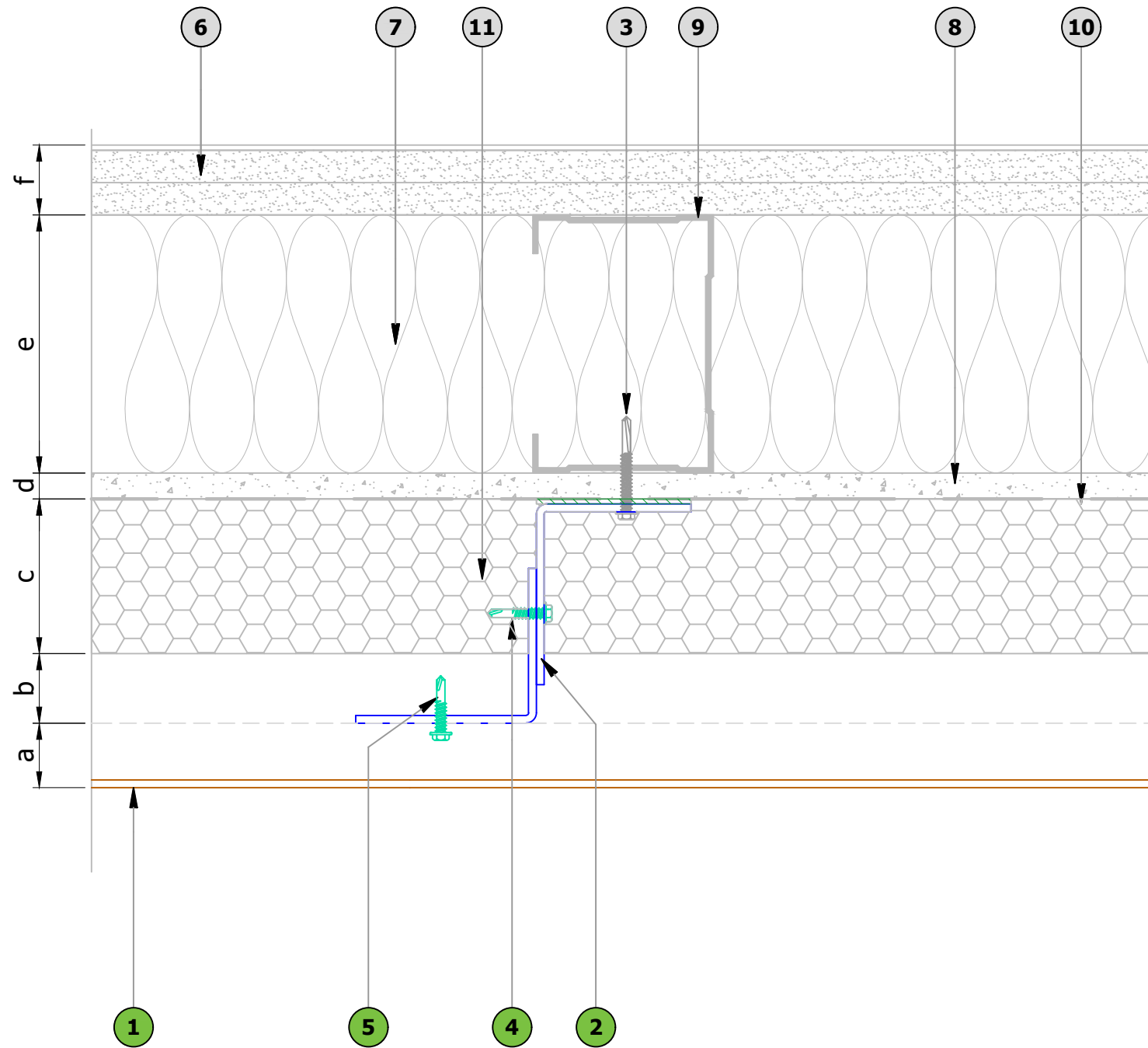
Location Drawing

Details are for indicative purposes only, it is the responsibility of the installer / designer to ensure the specification compliance for each project, PSP will not be held responsible for any project non conformities.

A	First Issue	15.01.21
Rev	Details	Date
PSP SYSTEM - Matrix DF		
 Unit 11 All Saints Industrial Estate Shildon County Durham DL4 2RD Tel: 00 44 (0) 1388 770490 Fax: 00 44 (0) 1388 778068 Email: design@pspuk.com www.pspuk.com		Client: P.S.P.
		Project: Matrix DF
Title: Vertical Panel Joint Detail (Plan View)		
Drawn by: sns	Date: 15.01.21	Scale: 1:2 @ A3
Drwg. No.: PSP-DF-P01	Status: Revision:	Approved A

DO NOT SCALE

IF IN DOUBT - ASK



PARTS LIST

1	Aluminium panel skin, Varies
2	Aluminium carrier angles, 3mm thick
3	Stainless steel fixing (By Others)
4	JT4-4-4.8x19 Stainless steel fixing
5	JT4-6-5.5x22 A14 Stainless steel fixing
6	Internal boards (By Others)
7	Insulation (By Others)
8	Cement particle board (By Others)
9	SFS support structure (By Others)
10	Breather membrane (By Others)
11	Additional rigid sheet insulation if required (By Others)
12	Optional Aluminium Flashing
13	Fire/Smoke Barrier and fittings (by Others) - Refer to specialist
14	EPDM (By Others)
15	Thermally Broken Aluminium Profile
16	Adjacent Window / Door Profile
17	External Corner Flashing
18	Fixing Bracket

Refer to Specialist recommendation for all Smoke and Fire protection.

***Caution fire barriers are to be considered.**

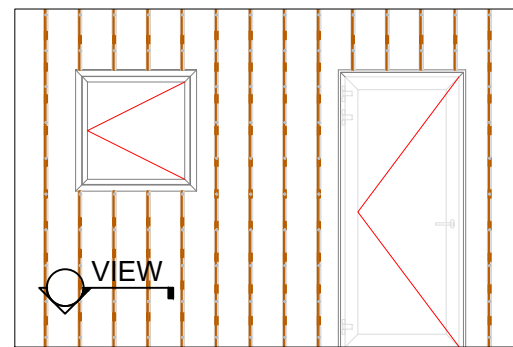
LEGEND:

N (in a green circle)	part of system, provided by PSP
N (in a white circle)	not part of system, can be provided by PSP
N (in a grey circle)	provided by others

MIDSPAN SUPPORT DETAIL


LEGEND

a	PSP Panel thickness - Varies
b	Ventilated cavity (British standard - 25mm, NHBC - 38mm (baffled joints) and 50mm (open joints))
c	Insulation by others (must be Part B Compliant)
d	CP board by others - thickness established by project specification
e	SFS by others - depth established by project specification
f	Internal finishes by others



Location Drawing

Details are for indicative purposes only, it is the responsibility of the installer / designer to ensure the specification compliance for each project, PSP will not be held responsible for any project non conformities.

A	First Issue	15.01.21
Rev	Details	Date
PSP SYSTEM - Matrix DF		
 Unit 11 All Saints Industrial Estate Shildon County Durham DL4 2RD Tel: 00 44 (0) 1388 770490 Fax: 00 44 (0) 1388 778068 Email: design@pspuk.com www.pspuk.com	Client:	P.S.P.
	Project:	Matrix DF
	Title: Midspan Support Detail (Plan View)	
	Drawn by:	Date:
sns	15.01.21	1:2 @ A3
Drwg. No.:	Status:	Approved
PSP-DF-P02	Revision:	A

DO NOT SCALE

IF IN DOUBT - ASK

PARTS LIST

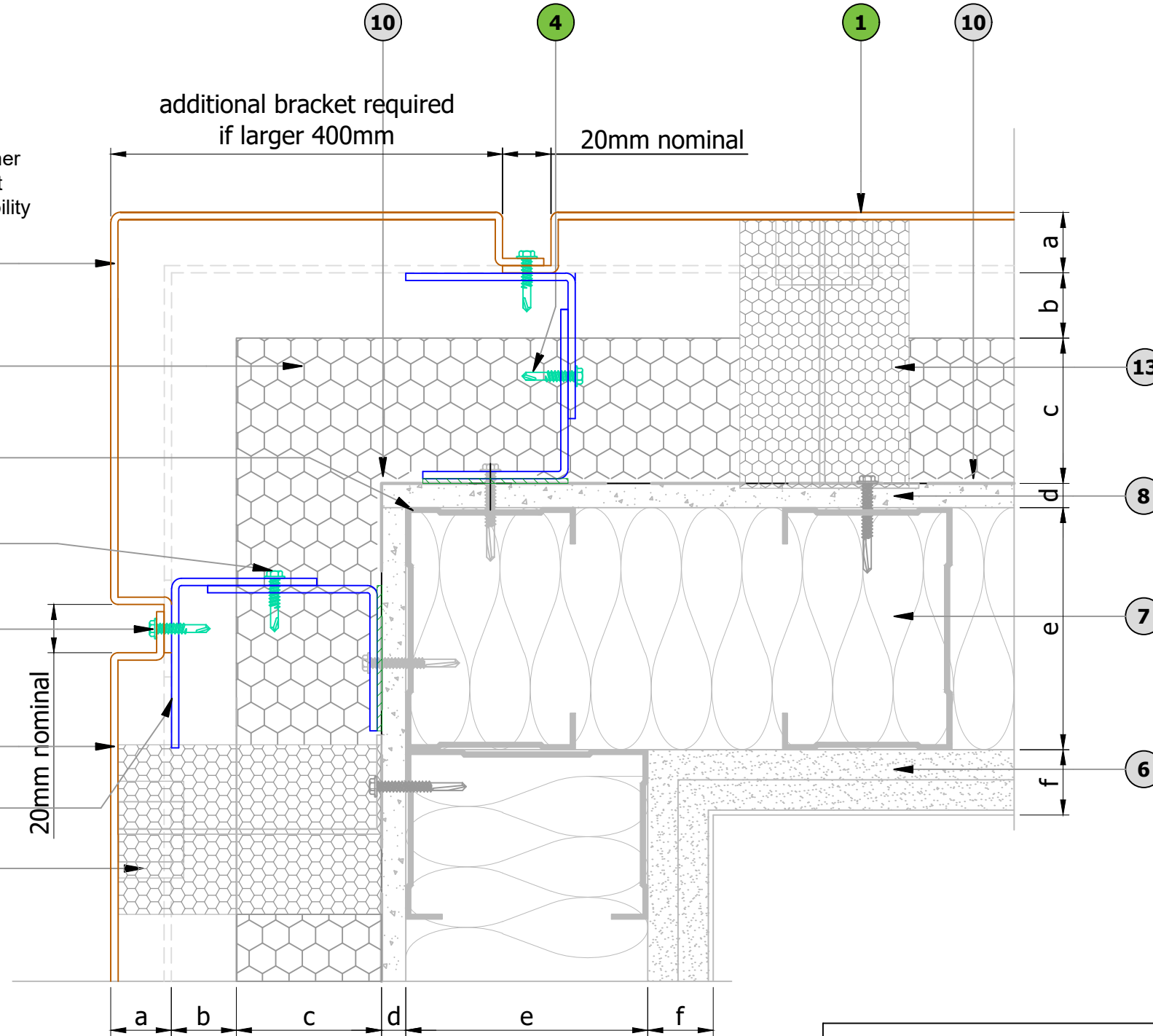
1	Aluminium panel skin, Varies
2	Aluminium carrier angles, 3mm thick
3	Stainless steel fixing (By Others)
4	JT4-4-4.8x19 Stainless steel fixing
5	JT4-6-5.5x22 A14 Stainless steel fixing
6	Internal boards (By Others)
7	Insulation (By Others)
8	Cement particle board (By Others)
9	SFS support structure (By Others)
10	Breather membrane (By Others)
11	Additional rigid sheet insulation if required (By Others)
12	Optional Aluminium Flashing
13	Fire/Smoke Barrier and fittings (by Others) - Refer to specialist
14	EPDM (By Others)
15	Thermally Broken Aluminium Profile
16	Adjacent Window / Door Profile
17	External Corner Flashing
18	Fixing Bracket

Maximum corner length to suit material availability

additional bracket required if larger 400mm

20mm nominal

20mm nominal



Refer to Specialist recommendation for all Smoke and Fire protection.

***Caution fire barriers are to be considered.**

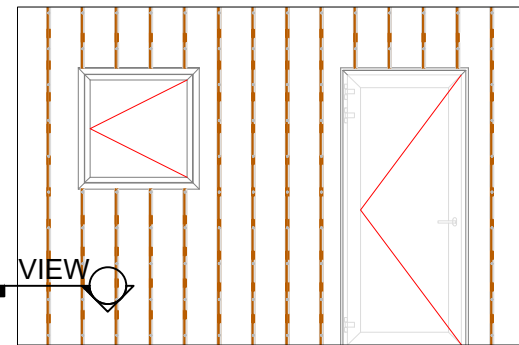
LEGEND:

N (in a green circle)	→ part of system, provided by PSP
N (in a white circle)	→ not part of system, can be provided by PSP
N (in a grey circle)	→ provided by others

EXTERNAL CORNER PANEL DETAIL


LEGEND

a	PSP Panel thickness - Varies
b	Ventilated cavity (British standard - 25mm, NHBC - 38mm (baffled joints) and 50mm (open joints))
c	Insulation by others (must be Part B Compliant)
d	CP board by others - thickness established by project specification
e	SFS by others - depth established by project specification
f	Internal finishes by others



Location Drawing

Details are for indicative purposes only, it is the responsibility of the installer / designer to ensure the specification compliance for each project, PSP will not be held responsible for any project non conformities.

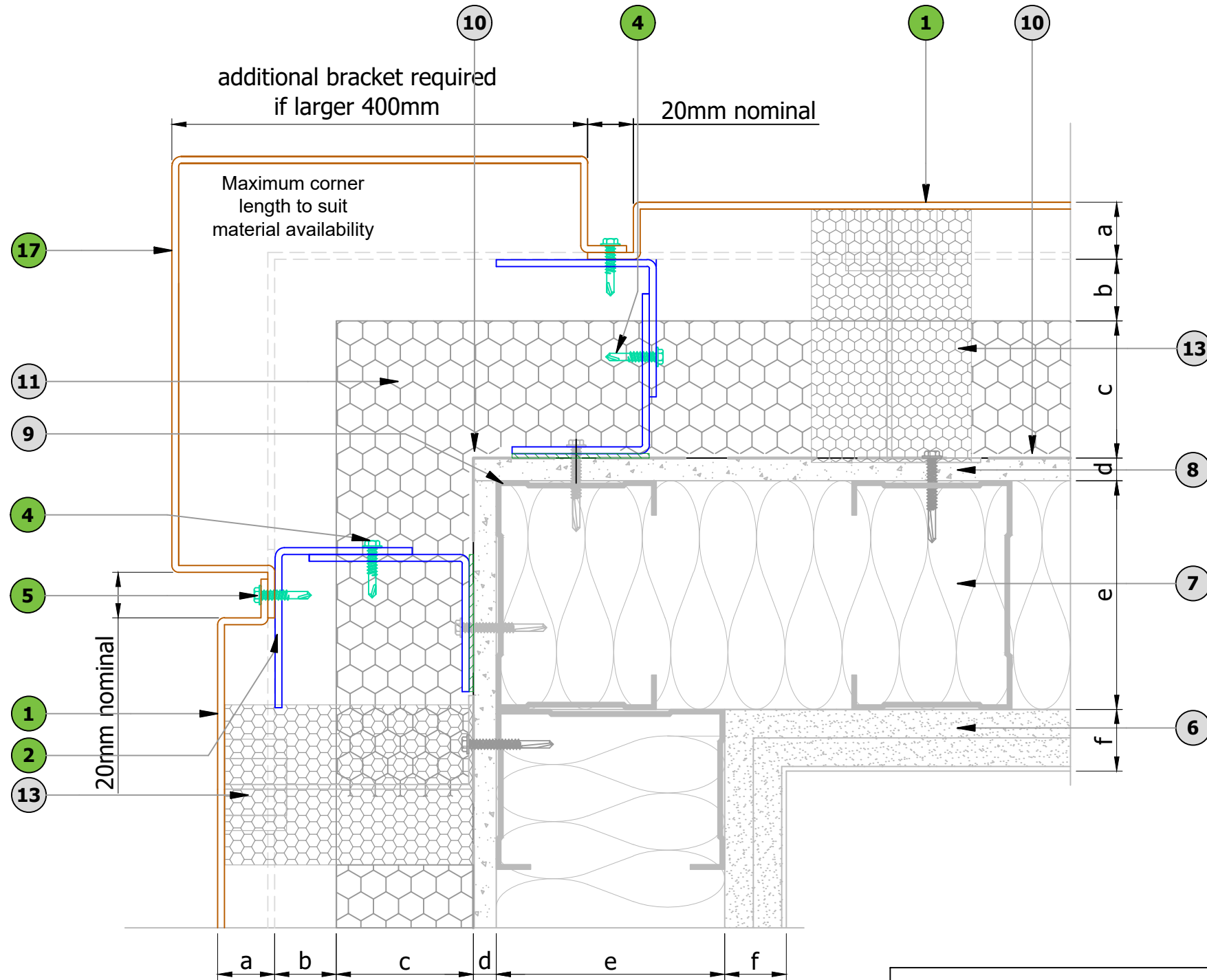
A	First Issue	15.01.21
Rev	Details	Date
PSP SYSTEM - Matrix DF		
 Unit 11 All Saints Industrial Estate Shildon County Durham DL4 2RD Tel: 00 44 (0) 1388 770490 Fax: 00 44 (0) 1388 778068 Email: design@pspuk.com www.pspuk.com		Client: P.S.P.
		Project: Matrix DF
Title: External Corner Panel Detail (Plan View)		
Drawn by: sns	Date: 15.01.21	Scale: 1:2 @ A3
Drwg. No.:	Status:	Approved
PSP-DF-P03	Revision:	A

DO NOT SCALE

IF IN DOUBT - ASK

PARTS LIST

1	Aluminium panel skin, Varies
2	Aluminium carrier angles, 3mm thick
3	Stainless steel fixing (By Others)
4	JT4-4-4.8x19 Stainless steel fixing
5	JT4-6-5.5x22 A14 Stainless steel fixing
6	Internal boards (By Others)
7	Insulation (By Others)
8	Cement particle board (By Others)
9	SFS support structure (By Others)
10	Breather membrane (By Others)
11	Additional rigid sheet insulation if required (By Others)
12	Optional Aluminium Flashing
13	Fire/Smoke Barrier and fittings (by Others) - Refer to specialist
14	EPDM (By Others)
15	Thermally Broken Aluminium Profile
16	Adjacent Window / Door Profile
17	External Corner Flashing
18	Fixing Bracket



Refer to Specialist recommendation for all Smoke and Fire protection.

***Caution fire barriers are to be considered.**

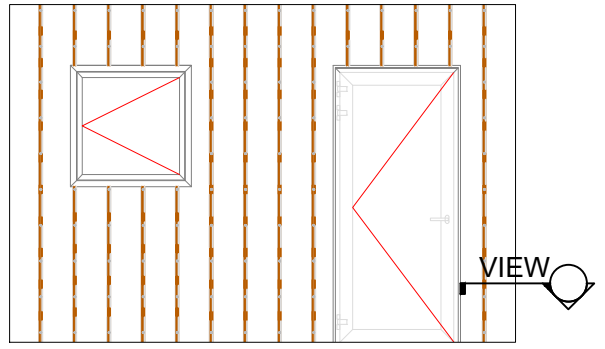
LEGEND:

(N) →	part of system, provided by PSP
(N) →	not part of system, can be provided by PSP
(N) →	provided by others

EXTERNAL CORNER PANEL DETAIL


LEGEND

a	PSP Panel thickness - Varies
b	Ventilated cavity (British standard - 25mm, NHBC - 38mm (baffled joints) and 50mm (open joints))
c	Insulation by others (must be Part B Compliant)
d	CP board by others - thickness established by project specification
e	SFS by others - depth established by project specification
f	Internal finishes by others



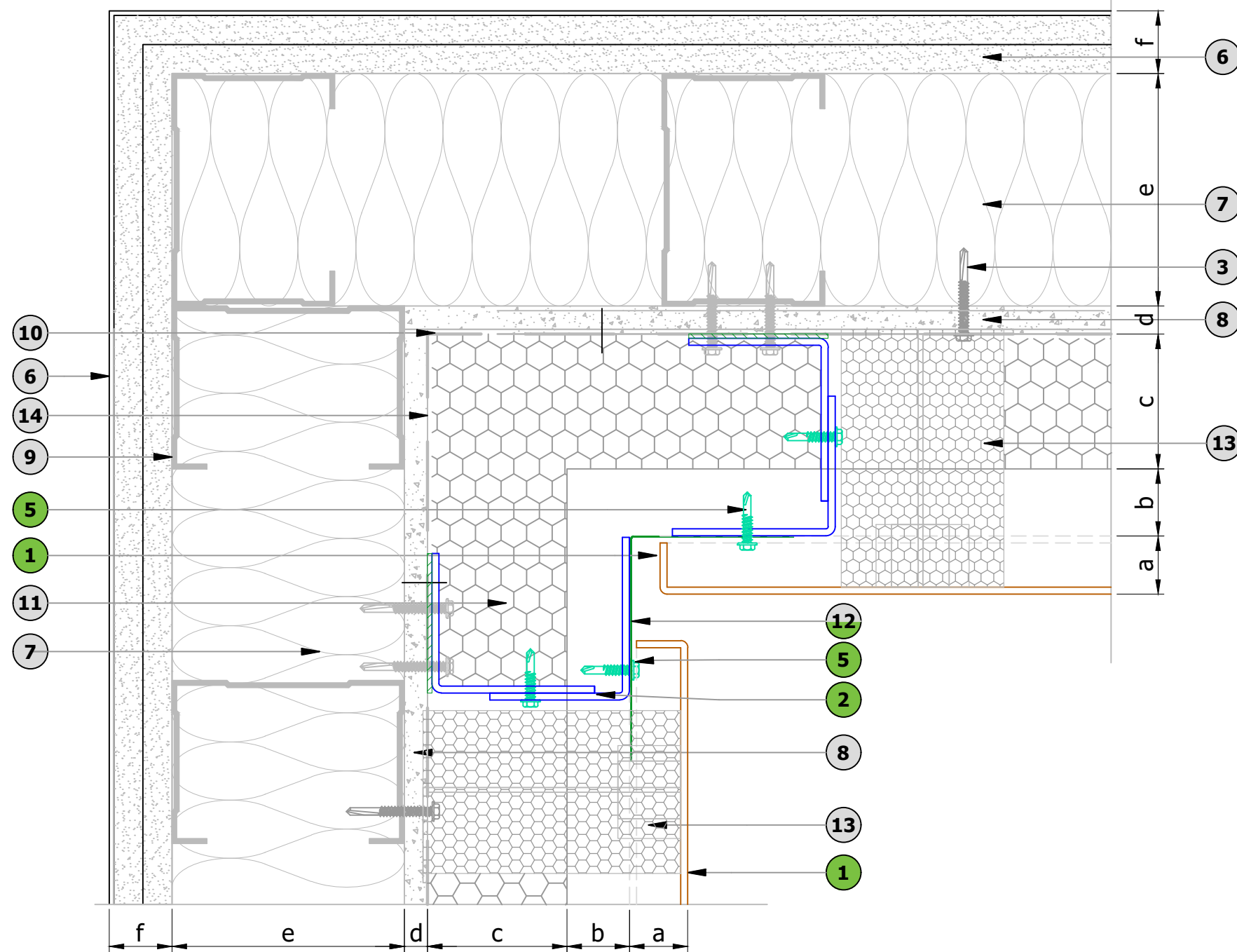
Location Drawing

Details are for indicative purposes only, it is the responsibility of the installer / designer to ensure the specification compliance for each project, PSP will not be held responsible for any project non conformities.

A	First Issue	15.01.21
Rev	Details	Date
PSP SYSTEM - Matrix DF		
 Unit 11 All Saints Industrial Estate Shildon County Durham DL4 2RD Tel: 00 44 (0) 1388 770490 Fax: 00 44 (0) 1388 778068 Email: design@pspuk.com www.pspuk.com		Client: P.S.P.
		Project: Matrix DF
Title: Feature Corner Flashing Detail (Plan View)		
Drawn by: sns	Date: 15.01.21	Scale: 1:2 @ A3
Drwg. No.: PSP-DF-P04	Status: Approved	Revision: A

DO NOT SCALE

IF IN DOUBT - ASK



PARTS LIST	
1	Aluminium panel skin, Varies
2	Aluminium carrier angles, 3mm thick
3	Stainless steel fixing (By Others)
4	JT4-4-4.8x19 Stainless steel fixing
5	JT4-6-5.5x22 A14 Stainless steel fixing
6	Internal boards (By Others)
7	Insulation (By Others)
8	Cement particle board (By Others)
9	SFS support structure (By Others)
10	Breather membrane (By Others)
11	Additional rigid sheet insulation if required (By Others)
12	Optional Aluminium Flashing
13	Fire/Smoke Barrier and fittings (by Others) - Refer to specialist
14	EPDM (By Others)
15	Thermally Broken Aluminium Profile
16	Adjacent Window / Door Profile
17	External Corner Flashing
18	Fixing Bracket

Refer to Specialist recommendation for all Smoke and Fire protection.

***Caution fire barriers are to be considered.**

LEGEND:	
	part of system, provided by PSP
	not part of system, can be provided by PSP
	provided by others

INTERNAL CORNER DETAIL

LEGEND	
a	PSP Panel thickness - Varies
b	Ventilated cavity (British standard - 25mm, NHBC - 38mm (baffled joints) and 50mm (open joints))
c	Insulation by others (must be Part B Compliant)
d	CP board by others - thickness established by project specification
e	SFS by others - depth established by project specification
f	Internal finishes by others

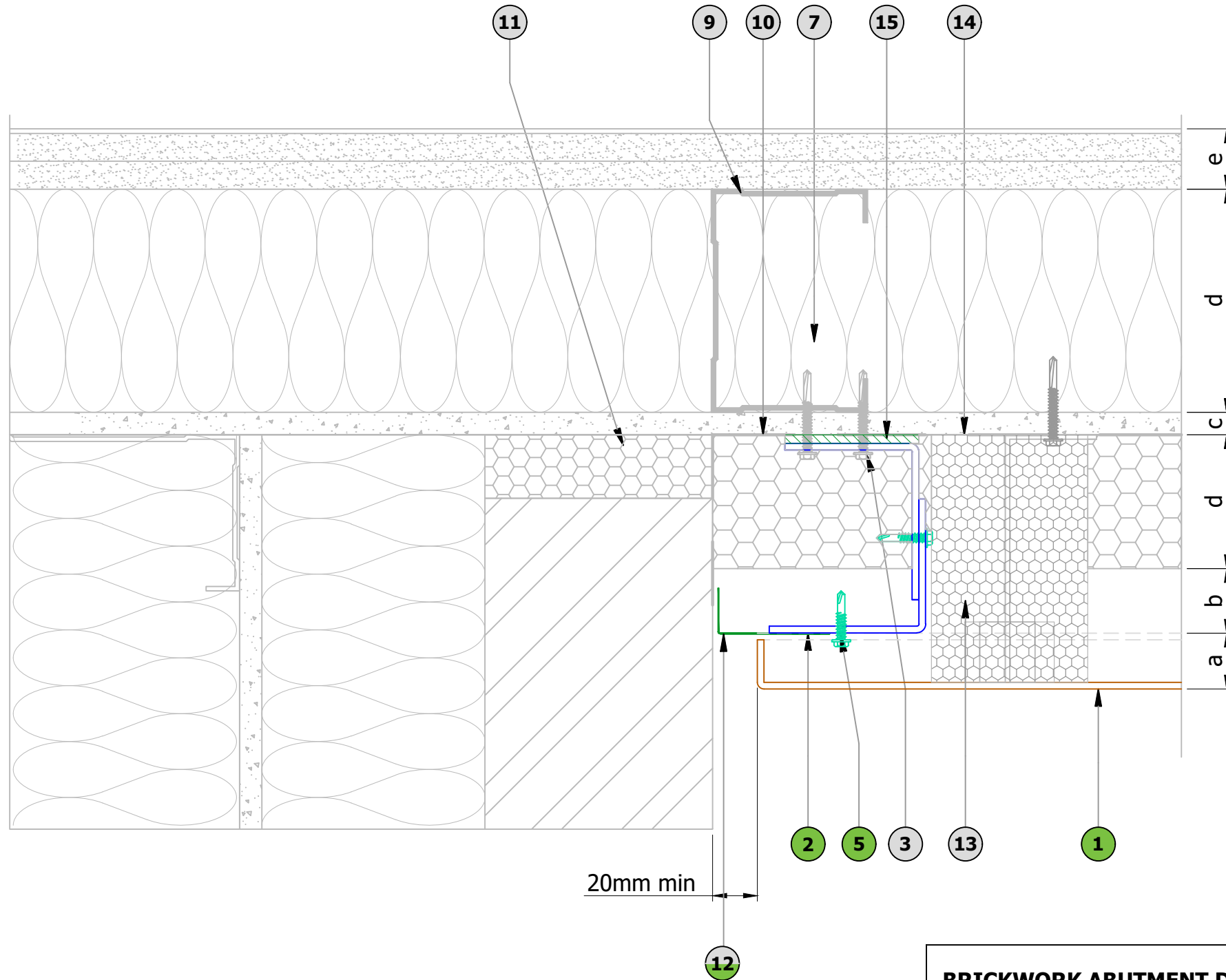
Location Drawing

Details are for indicative purposes only, it is the responsibility of the installer / designer to ensure the specification compliance for each project, PSP will not be held responsible for any project non conformities.

A	First Issue	15.01.21
Rev	Details	Date
PSP SYSTEM - Matrix DF		
<p>Unit 11 All Saints Industrial Estate Shildon County Durham DL4 2RD Tel: 00 44 (0) 1388 770490 Fax: 00 44 (0) 1388 778068 Email: design@pspuk.com www.pspuk.com</p>	Client: P.S.P.	
	Project: Matrix DF	
	Title: Internal Corner Detail (Plan View)	
	Drawn by: sns	Date: 15.01.21
Drwg. No.:	Status:	Approved
PSP-DF-P05	Revision:	A

DO NOT SCALE

IF IN DOUBT - ASK



PARTS LIST

1	Aluminium panel skin, Varies
2	Aluminium carrier angles, 3mm thick
3	Stainless steel fixing (By Others)
4	JT4-4-4.8x19 Stainless steel fixing
5	JT4-6-5.5x22 A14 Stainless steel fixing
6	Internal boards (By Others)
7	Insulation (By Others)
8	Cement particle board (By Others)
9	SFS support structure (By Others)
10	Breather membrane (By Others)
11	Additional rigid sheet insulation if required (By Others)
12	Optional Aluminium Flashing
13	Fire/Smoke Barrier and fittings (by Others) - Refer to specialist
14	EPDM (By Others)
15	Thermally Broken Aluminium Profile
16	Adjacent Window / Door Profile
17	External Corner Flashing
18	Fixing Bracket

Refer to Specialist recommendation for all Smoke and Fire protection.
*Caution fire barriers are to be considered.

LEGEND:

	part of system, provided by PSP
	not part of system, can be provided by PSP
	provided by others

BRICKWORK ABUTMENT DETAIL

LEGEND

a	PSP Panel thickness - Varies
b	Ventilated cavity (British standard - 25mm, NHBC - 38mm (baffled joints) and 50mm (open joints))
c	Insulation by others (must be Part B Compliant)
d	CP board by others - thickness established by project specification
e	SFS by others - depth established by project specification
f	Internal finishes by others

Details are for indicative purposes only, it is the responsibility of the installer / designer to ensure the specification compliance for each project, PSP will not be held responsible for any project non conformities.

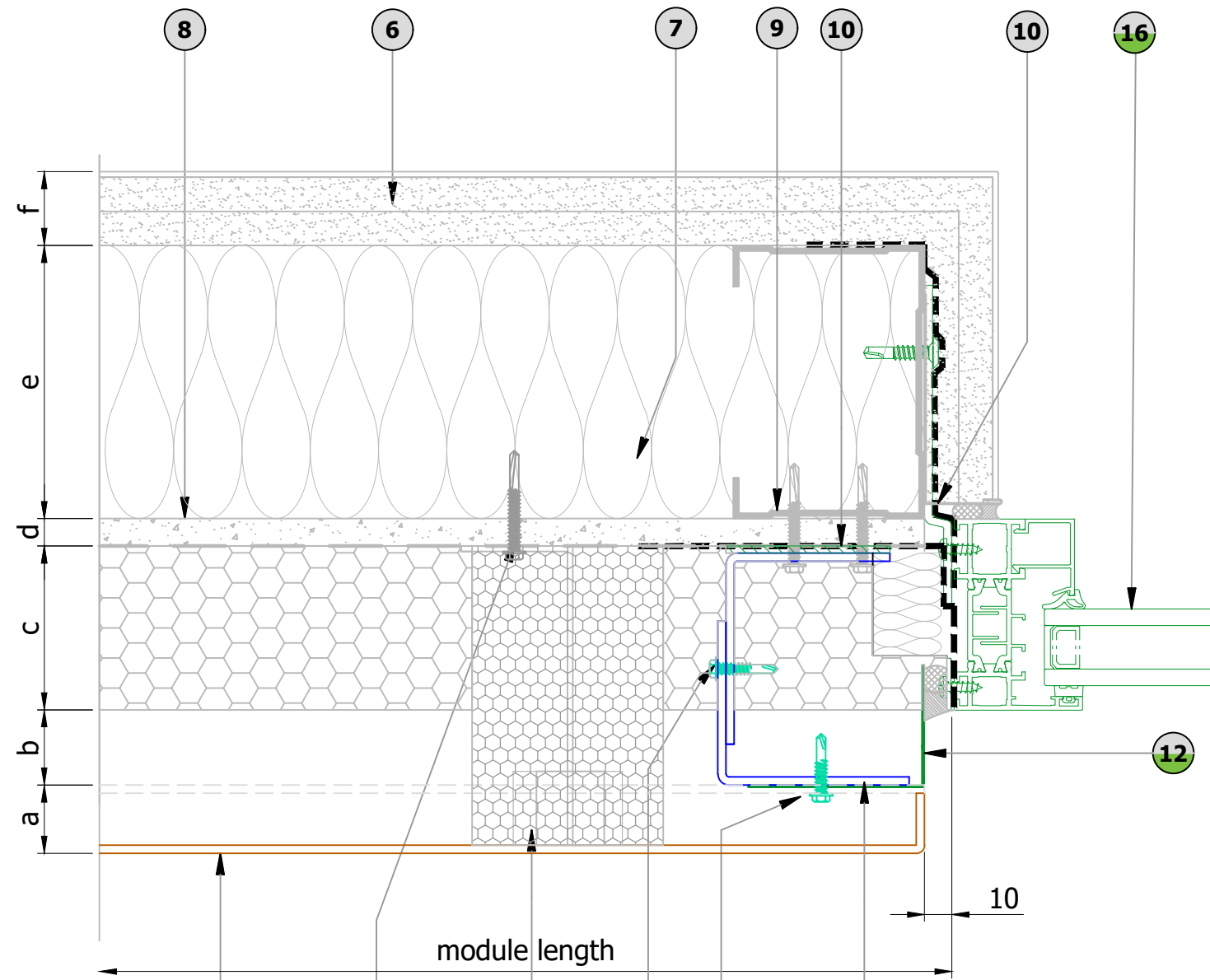
A	First Issue	15.01.21
Rev	Details	Date

PSP SYSTEM - Matrix DF

 Unit 11 All Saints Industrial Estate Shildon County Durham DL4 2RD Tel: 00 44 (0) 1388 770490 Fax: 00 44 (0) 1388 778068 Email: design@pspuk.com www.pspuk.com	Client: P.S.P.	
	Project: Matrix DF	
Title: Brickwork Abutment Detail (Plan View)		
Drawn by: sns	Date: 15.01.21	Scale: 1:2 @ A3
Drwg. No.: PSP-DF-P06	Status: Approved	Revision: A

DO NOT SCALE

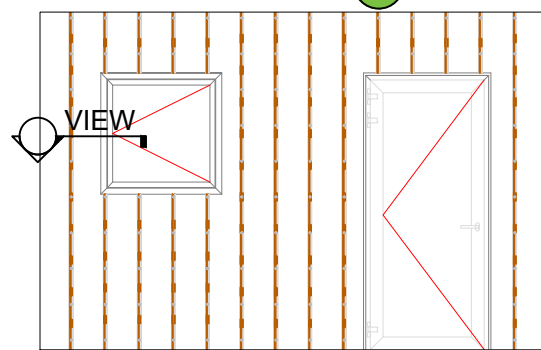
IF IN DOUBT - ASK



PARTS LIST	
1	Aluminium panel skin, Varies
2	Aluminium carrier angles, 3mm thick
3	Stainless steel fixing (By Others)
4	JT4-4-4.8x19 Stainless steel fixing
5	JT4-6-5.5x22 A14 Stainless steel fixing
6	Internal boards (By Others)
7	Insulation (By Others)
8	Cement particle board (By Others)
9	SFS support structure (By Others)
10	Breather membrane (By Others)
11	Additional rigid sheet insulation if required (By Others)
12	Optional Aluminium Flashing
13	Fire/Smoke Barrier and fittings (by Others) - Refer to specialist
14	EPDM (By Others)
15	Thermally Broken Aluminium Profile
16	Adjacent Window / Door Profile
17	External Corner Flashing
18	Fixing Bracket

Refer to Specialist recommendation for all Smoke and Fire protection.
*Caution fire barriers are to be considered.

LEGEND:	
	part of system, provided by PSP
	not part of system, can be provided by PSP
	provided by others



Location Drawing

WINDOW JAMB DETAIL

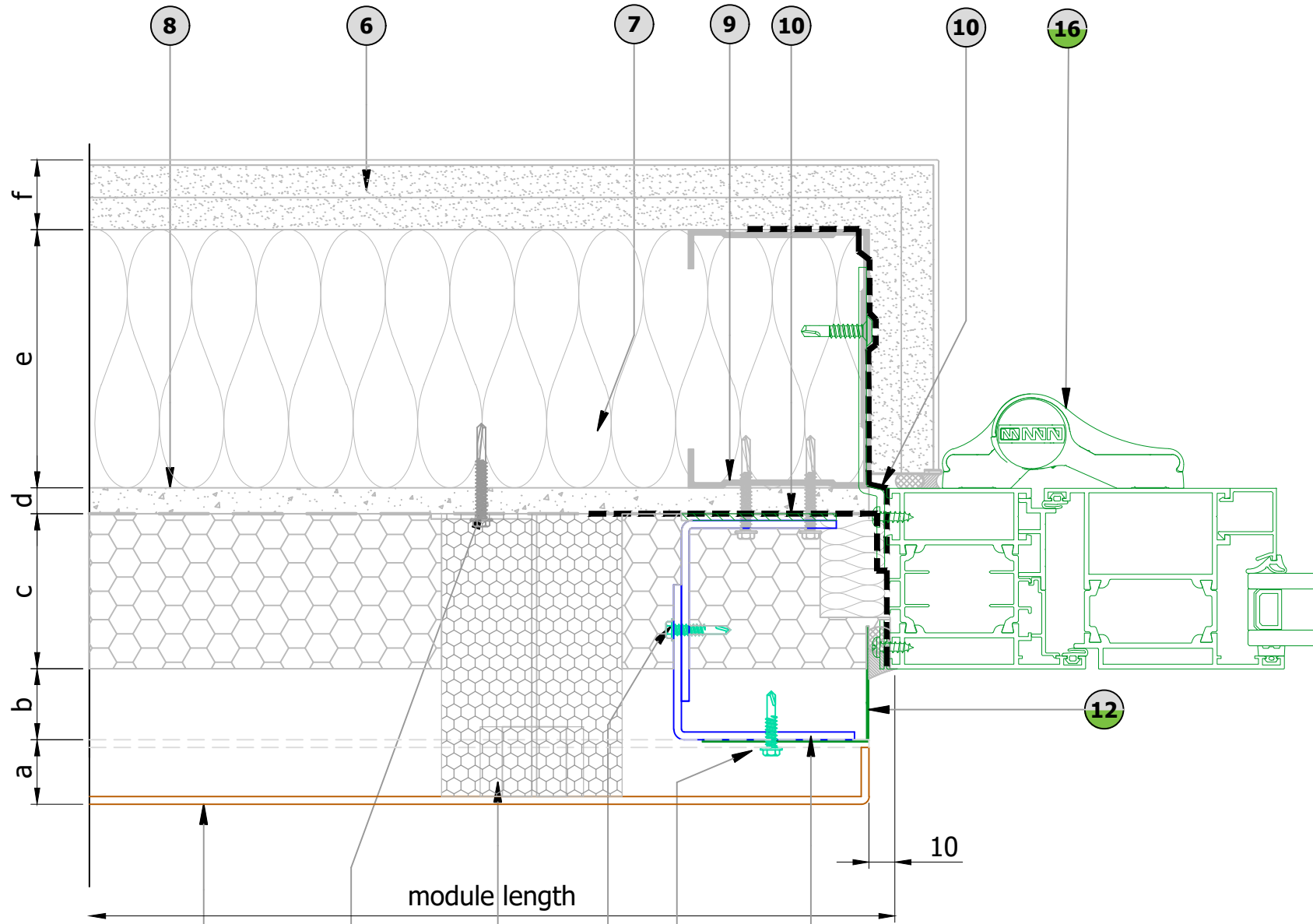
LEGEND	
a	PSP Panel thickness - Varies
b	Ventilated cavity (British standard - 25mm, NHBC - 38mm (baffled joints) and 50mm (open joints))
c	Insulation by others (must be Part B Compliant)
d	CP board by others - thickness established by project specification
e	SFS by others - depth established by project specification
f	Internal finishes by others

Details are for indicative purposes only, it is the responsibility of the installer / designer to ensure the specification compliance for each project, PSP will not be held responsible for any project non conformities.

A	First Issue	15.01.21
Rev	Details	Date
PSP SYSTEM - Matrix DF		
<p>Unit 11 All Saints Industrial Estate Shildon County Durham DL4 2RD</p> <p>Tel: 00 44 (0) 1388 770490 Fax: 00 44 (0) 1388 778068 Email: design@pspuk.com www.pspuk.com</p>		Client: P.S.P.
		Project: Matrix DF
		Title: Window Jamb Detail (Plan View)
Drawn by: sns	Date: 15.01.21	Scale: 1:2 @ A3
Drwg. No.:	Status:	Approved
PSP-DF-P07	Revision:	A

DO NOT SCALE

IF IN DOUBT - ASK



PARTS LIST

1	Aluminium panel skin, Varies
2	Aluminium carrier angles, 3mm thick
3	Stainless steel fixing (By Others)
4	JT4-4-4.8x19 Stainless steel fixing
5	JT4-6-5.5x22 A14 Stainless steel fixing
6	Internal boards (By Others)
7	Insulation (By Others)
8	Cement particle board (By Others)
9	SFS support structure (By Others)
10	Breather membrane (By Others)
11	Additional rigid sheet insulation if required (By Others)
12	Optional Aluminium Flashing
13	Fire/Smoke Barrier and fittings (by Others) - Refer to specialist
14	EPDM (By Others)
15	Thermally Broken Aluminium Profile
16	Adjacent Window / Door Profile
17	External Corner Flashing
18	Fixing Bracket

Refer to Specialist recommendation for all Smoke and Fire protection.

***Caution fire barriers are to be considered.**

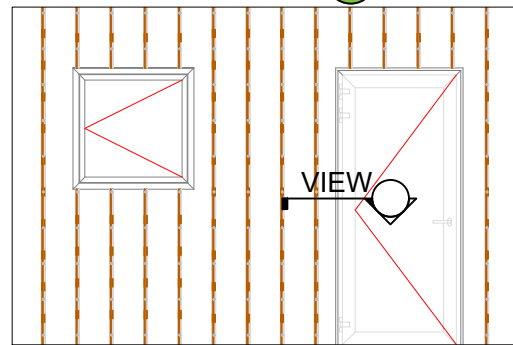
LEGEND:

	part of system, provided by PSP
	not part of system, can be provided by PSP
	provided by others

DOOR JAMB DETAIL

LEGEND

a	PSP Panel thickness - Varies
b	Ventilated cavity (British standard - 25mm, NHBC - 38mm (baffled joints) and 50mm (open joints))
c	Insulation by others (must be Part B Compliant)
d	CP board by others - thickness established by project specification
e	SFS by others - depth established by project specification
f	Internal finishes by others



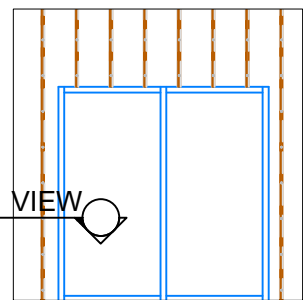
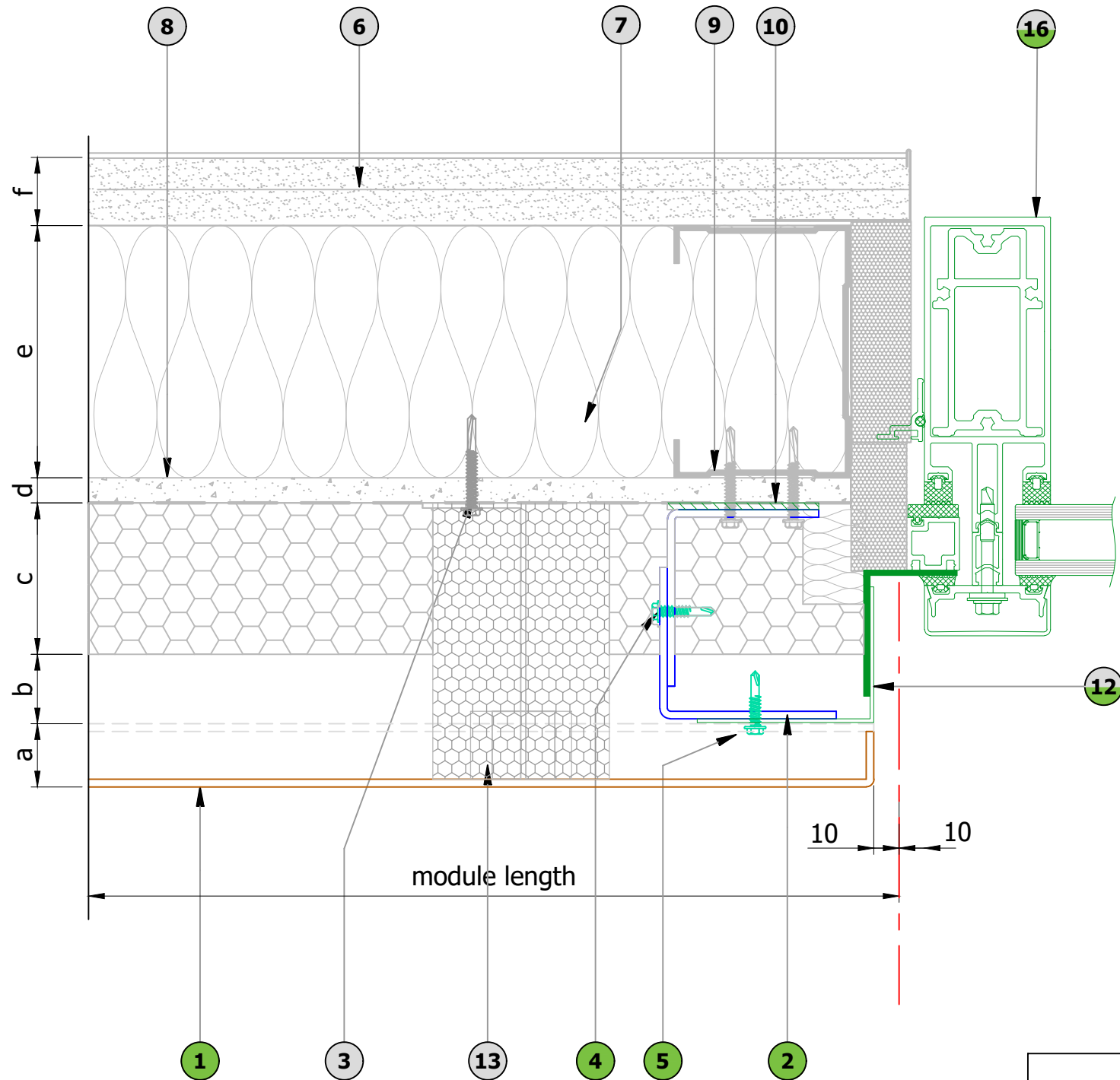
Location Drawing

Details are for indicative purposes only, it is the responsibility of the installer / designer to ensure the specification compliance for each project, PSP will not be held responsible for any project non conformities.

A	First Issue	15.01.21
Rev	Details	Date
PSP SYSTEM - Matrix DF		
<p>Unit 11 All Saints Industrial Estate Shildon County Durham DL4 2RD Tel: 00 44 (0) 1388 770490 Fax: 00 44 (0) 1388 778068 Email: design@pspuk.com www.pspuk.com</p>		Client: P.S.P.
		Project: Matrix DF
Drawn by: sns		Date: 15.01.21
Drwg. No.: PSP-DF-P08		Status: Approved
Revision: A		Scale: 1:2 @ A3

DO NOT SCALE

IF IN DOUBT - ASK



Location Drawing

Details are for indicative purposes only, it is the responsibility of the installer / designer to ensure the specification compliance for each project, PSP will not be held responsible for any project non conformities.

PARTS LIST

1	Aluminium panel skin, Varies
2	Aluminium carrier angles, 3mm thick
3	Stainless steel fixing (By Others)
4	JT4-4-4.8x19 Stainless steel fixing
5	JT4-6-5.5x22 A14 Stainless steel fixing
6	Internal boards (By Others)
7	Insulation (By Others)
8	Cement particle board (By Others)
9	SFS support structure (By Others)
10	Breather membrane (By Others)
11	Additional rigid sheet insulation if required (By Others)
12	Optional Aluminium Flashing
13	Fire/Smoke Barrier and fittings (by Others) - Refer to specialist
14	EPDM (By Others)
15	Thermally Broken Aluminium Profile
16	Adjacent Window / Door Profile
17	External Corner Flashing
18	Fixing Bracket

Refer to Specialist recommendation for all Smoke and Fire protection.

***Caution fire barriers are to be considered.**

LEGEND:

	part of system, provided by PSP
	not part of system, can be provided by PSP
	provided by others

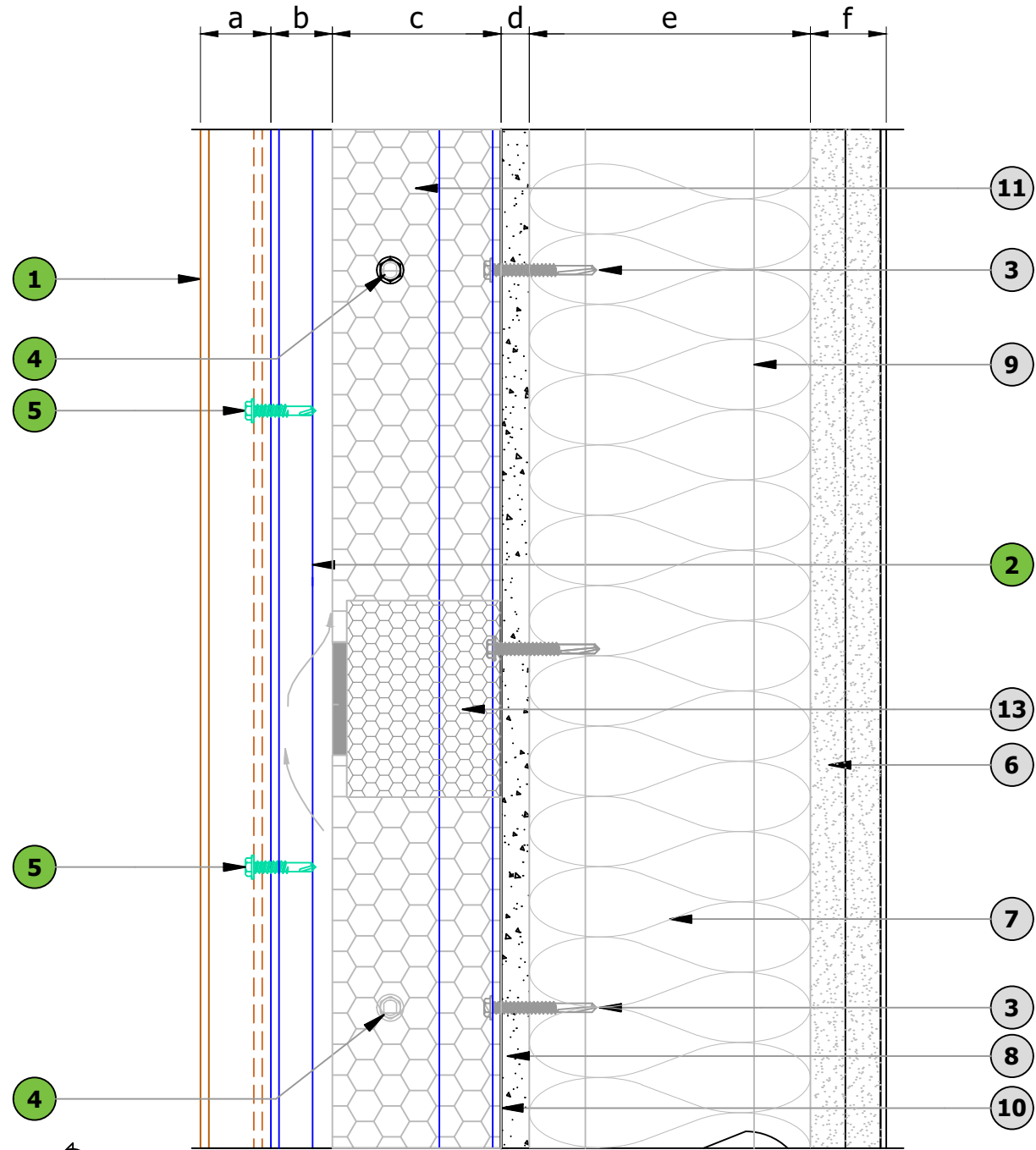
CURTAIN WALL JAMB DETAIL

LEGEND	
a	PSP Panel thickness - Varies
b	Ventilated cavity (British standard - 25mm, NHBC - 38mm (baffled joints) and 50mm (open joints))
c	Insulation by others (must be Part B Compliant)
d	CP board by others - thickness established by project specification
e	SFS by others - depth established by project specification
f	Internal finishes by others

A	First Issue	15.01.21
Rev	Details	Date
PSP SYSTEM - Matrix DF		
<p>Unit 11 All Saints Industrial Estate Shildon County Durham DL4 2RD Tel: 00 44 (0) 1388 770490 Fax: 00 44 (0) 1388 778068 Email: design@pspuk.com www.pspuk.com</p>		Client: P.S.P.
		Project: Matrix DF
		Title: Curtain Walling Jamb Detail 1 (Plan View)
Drawn by: sns	Date: 15.01.21	Scale: 1:2 @ A3
Drwg. No.:	Status:	Approved
PSP-DF-P09	Revision:	A

DO NOT SCALE

IF IN DOUBT - ASK

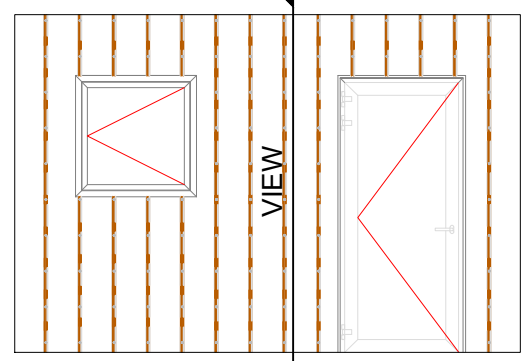


PARTS LIST	
1	Aluminium panel skin, Varies
2	Aluminium carrier angles, 3mm thick
3	Stainless steel fixing (By Others)
4	JT4-4-4.8x19 Stainless steel fixing
5	JT4-6-5.5x22 A14 Stainless steel fixing
6	Internal boards (By Others)
7	Insulation (By Others)
8	Cement particle board (By Others)
9	SFS support structure (By Others)
10	Breather membrane (By Others)
11	Additional rigid sheet insulation if required (By Others)
12	Optional Aluminium Flashing
13	Fire/Smoke Barrier and fittings (by Others) - Refer to specialist
14	EPDM (By Others)
15	Thermally Broken Aluminium Profile
16	Adjacent Window / Door Profile
17	External Corner Flashing
18	Fixing Bracket

Refer to Specialist recommendation for all Smoke and Fire protection.

***Caution fire barriers are to be considered.**

LEGEND:	
	part of system, provided by PSP
	not part of system, can be provided by PSP
	provided by others



HORIZONTAL PANEL DETAIL

LEGEND	
a	PSP Panel thickness - Varies
b	Ventilated cavity (British standard - 25mm, NHBC - 38mm (baffled joints) and 50mm (open joints))
c	Insulation by others (must be Part B Compliant)
d	CP board by others - thickness established by project specification
e	SFS by others - depth established by project specification
f	Internal finishes by others

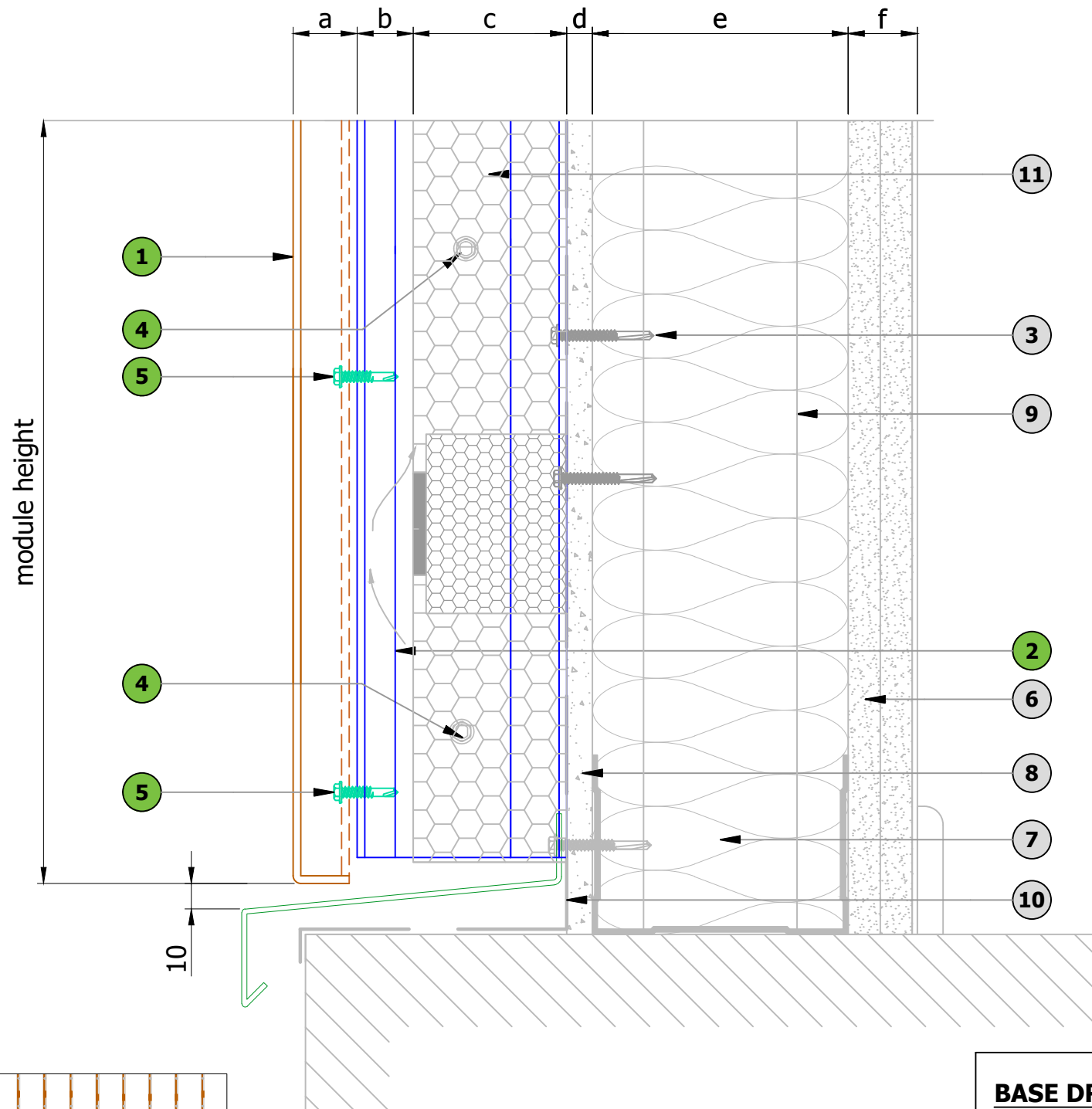
Details are for indicative purposes only, it is the responsibility of the installer / designer to ensure the specification compliance for each project, PSP will not be held responsible for any project non conformities.

A		First Issue	15.01.21
Rev		Details	Date

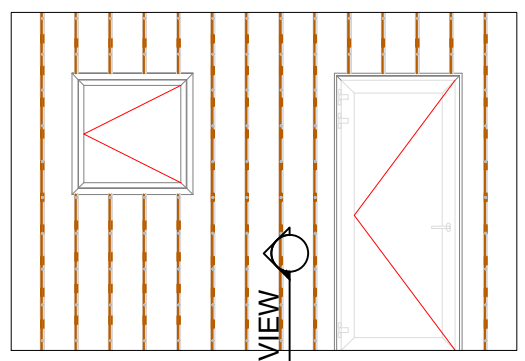
<p>Unit 11 All Saints Industrial Estate Shildon County Durham DL4 2RD Tel: 00 44 (0) 1388 770490 Fax: 00 44 (0) 1388 778068 Email: design@pspuk.com www.pspuk.com</p>	Client: P.S.P.	
	Project: Matrix DF	
	Title: Horizontal Panel Joint Detail (Section View)	
	Drawn by: sns	Date: 15.01.21
Drwg. No.: PSP-DF-S01	Status: Approved	Revision: A

DO NOT SCALE

IF IN DOUBT - ASK



BASE DRIP DETAIL



Location Drawing

Details are for indicative purposes only, it is the responsibility of the installer / designer to ensure the specification compliance for each project, PSP will not be held responsible for any project non conformities.


PARTS LIST	
1	Aluminium panel skin, Varies
2	Aluminium carrier angles, 3mm thick
3	Stainless steel fixing (By Others)
4	JT4-4-4.8x19 Stainless steel fixing
5	JT4-6-5.5x22 A14 Stainless steel fixing
6	Internal boards (By Others)
7	Insulation (By Others)
8	Cement particle board (By Others)
9	SFS support structure (By Others)
10	Breather membrane (By Others)
11	Additional rigid sheet insulation if required (By Others)
12	Optional Aluminium Flashing
13	Fire/Smoke Barrier and fittings (by Others) - Refer to specialist
14	EPDM (By Others)
15	Thermally Broken Aluminium Profile
16	Adjacent Window / Door Profile
17	External Corner Flashing
18	Fixing Bracket

Refer to Specialist recommendation for all Smoke and Fire protection.

***Caution fire barriers are to be considered.**

LEGEND:	
N →	part of system, provided by PSP
N →	not part of system, can be provided by PSP
N →	provided by others

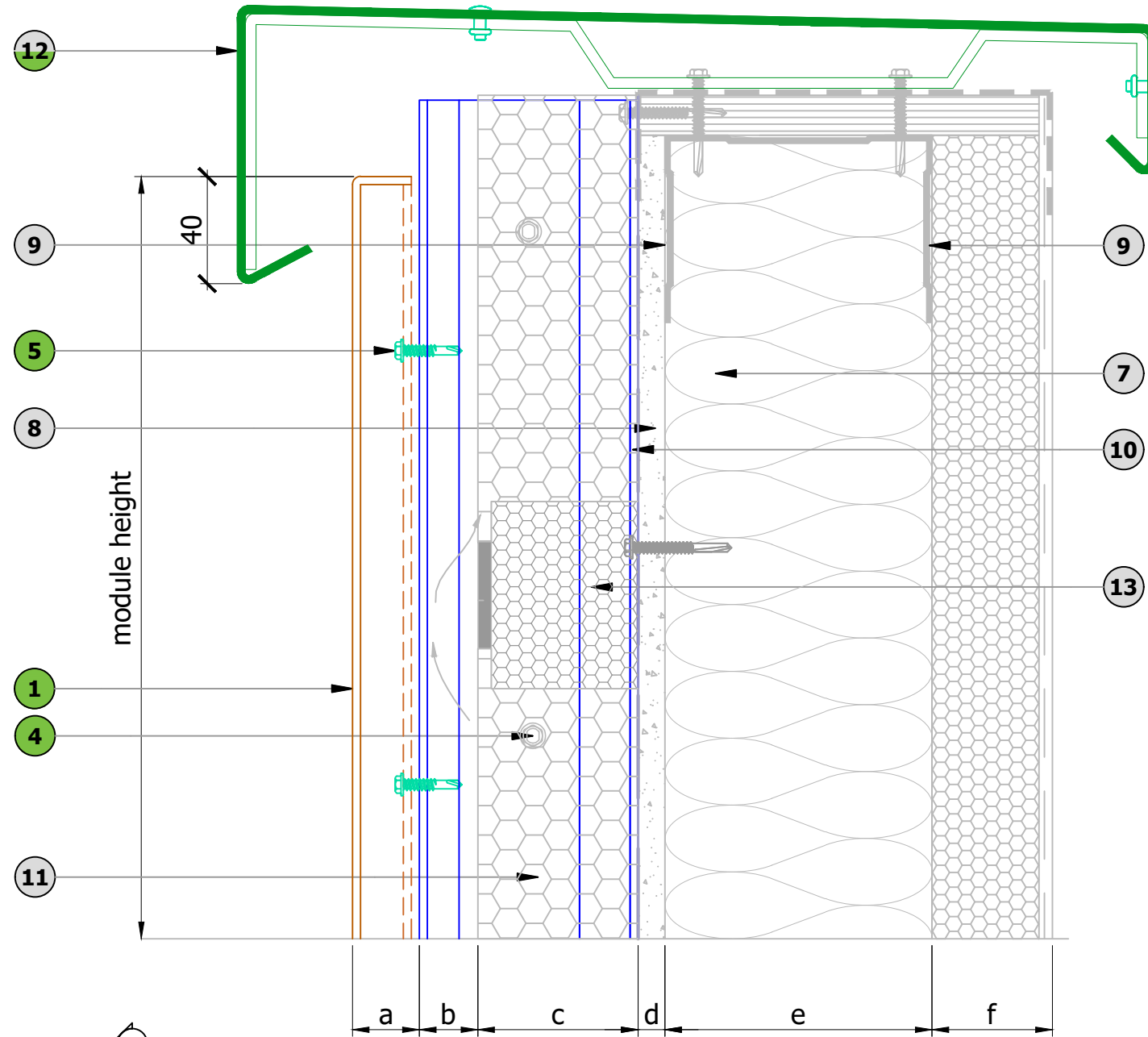
LEGEND	
a	PSP Panel thickness - Varies
b	Ventilated cavity (British standard - 25mm, NHBC - 38mm (baffled joints) and 50mm (open joints))
c	Insulation by others (must be Part B Compliant)
d	CP board by others - thickness established by project specification
e	SFS by others - depth established by project specification
f	Internal finishes by others

A	First Issue	15.01.21
Rev	Details	Date
 <p>Unit 11 All Saints Industrial Estate Shildon County Durham DL4 2RD Tel: 00 44 (0) 1388 770490 Fax: 00 44 (0) 1388 778068 Email: design@pspuke.com www.pspuk.com</p>		Client: P.S.P.
		Project: Matrix DF
Drawn by: sns		Date: 15.01.21
Drwg. No.: PSP-DF-S02		Status: Approved
Revision: A		Scale: 1:2 @ A3

DO NOT SCALE

IF IN DOUBT - ASK

Fixings to secure coping to be determined on an individual project basis.



PARTS LIST

1	Aluminium panel skin, Varies
2	Aluminium carrier angles, 3mm thick
3	Stainless steel fixing (By Others)
4	JT4-4-4.8x19 Stainless steel fixing
5	JT4-6-5.5x22 A14 Stainless steel fixing
6	Internal boards (By Others)
7	Insulation (By Others)
8	Cement particle board (By Others)
9	SFS support structure (By Others)
10	Breather membrane (By Others)
11	Additional rigid sheet insulation if required (By Others)
12	Optional Aluminium Flashing
13	Fire/Smoke Barrier and fittings (by Others) - Refer to specialist
14	EPDM (By Others)
15	Thermally Broken Aluminium Profile
16	Adjacent Window / Door Profile
17	External Corner Flashing
18	Fixing Bracket

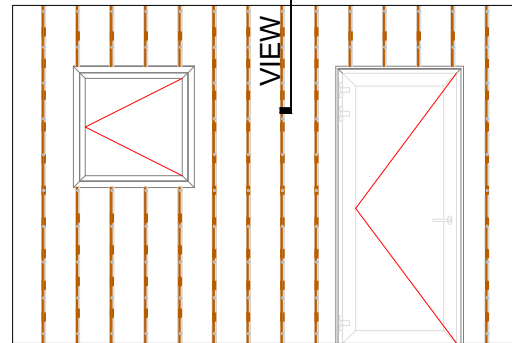
Refer to Specialist recommendation for all Smoke and Fire protection.

***Caution fire barriers are to be considered.**

LEGEND:

- part of system, provided by PSP
- not part of system, can be provided by PSP
- provided by others

COPING FLASHING DETAIL



Location Drawing

Details are for indicative purposes only, it is the responsibility of the installer / designer to ensure the specification compliance for each project, PSP will not be held responsible for any project non conformities.

LEGEND

a	PSP Panel thickness - Varies
b	Ventilated cavity (British standard - 25mm, NHBC - 38mm (baffled joints) and 50mm (open joints))
c	Insulation by others (must be Part B Compliant)
d	CP board by others - thickness established by project specification
e	SFS by others - depth established by project specification
f	Internal finishes by others

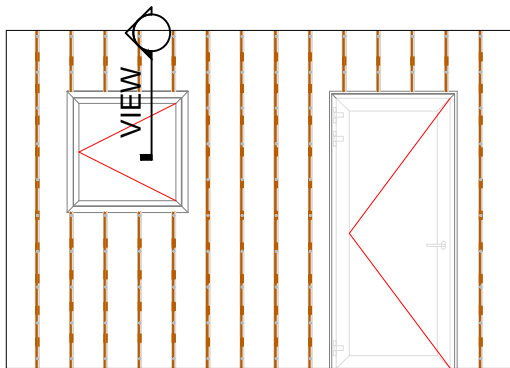
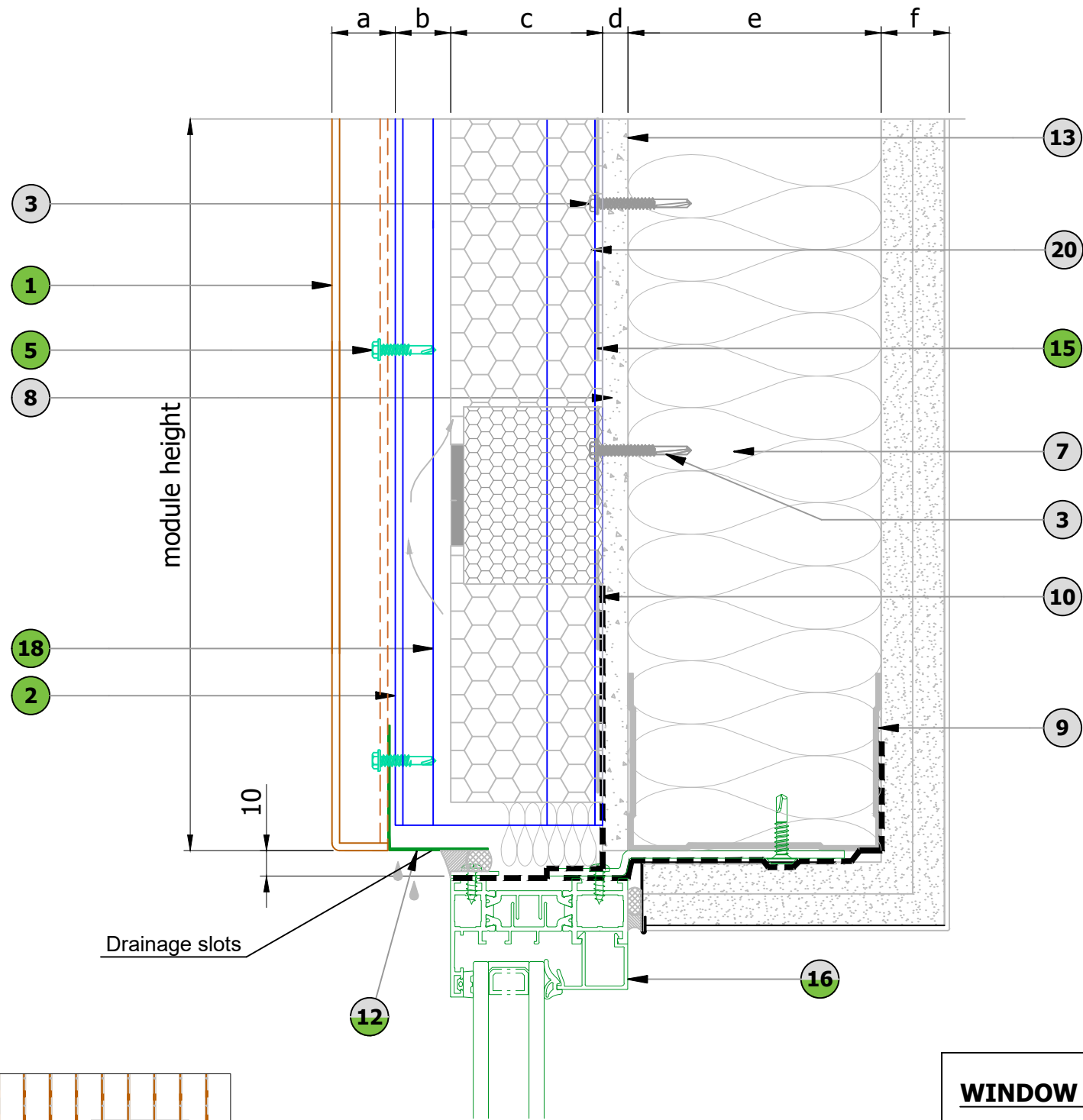
A	First Issue	15.01.21
Rev	Details	Date

PSP SYSTEM - Matrix DF

<p>Unit 11 All Saints Industrial Estate Shildon County Durham DL4 2RD Tel: 00 44 (0) 1388 770490 Fax: 00 44 (0) 1388 778068 Email: design@pspuk.com www.pspuk.com</p>	Client: P.S.P.	
	Project: Matrix DF	
Title: Coping Flashing Detail (Sectional View)		
Drawn by: sns	Date: 15.01.21	Scale: 1:2 @ A3
Drwg. No.:	Status:	Approved
PSP-DF-S03	Revision:	A

DO NOT SCALE

IF IN DOUBT - ASK



Location Drawing

Details are for indicative purposes only, it is the responsibility of the installer / designer to ensure the specification compliance for each project, PSP will not be held responsible for any project non conformities.


WINDOW HEAD DETAIL

LEGEND	
a	PSP Panel thickness - Varies
b	Ventilated cavity (British standard - 25mm, NHBC - 38mm (baffled joints) and 50mm (open joints))
c	Insulation by others (must be Part B Compliant)
d	CP board by others - thickness established by project specification
e	SFS by others - depth established by project specification
f	Internal finishes by others

PARTS LIST	
1	Aluminium panel skin, Varies
2	Aluminium carrier angles, 3mm thick
3	Stainless steel fixing (By Others)
4	JT4-4-4.8x19 Stainless steel fixing
5	JT4-6-5.5x22 A14 Stainless steel fixing
6	Internal boards (By Others)
7	Insulation (By Others)
8	Cement particle board (By Others)
9	SFS support structure (By Others)
10	Breather membrane (By Others)
11	Additional rigid sheet insulation if required (By Others)
12	Optional Aluminium Flashing
13	Fire/Smoke Barrier and fittings (by Others) - Refer to specialist
14	EPDM (By Others)
15	Thermally Broken Aluminium Profile
16	Adjacent Window / Door Profile
17	External Corner Flashing
18	Fixing Bracket

Refer to Specialist recommendation for all Smoke and Fire protection.
*Caution fire barriers are to be considered.

LEGEND:	
N	part of system, provided by PSP
N	not part of system, can be provided by PSP
N	provided by others

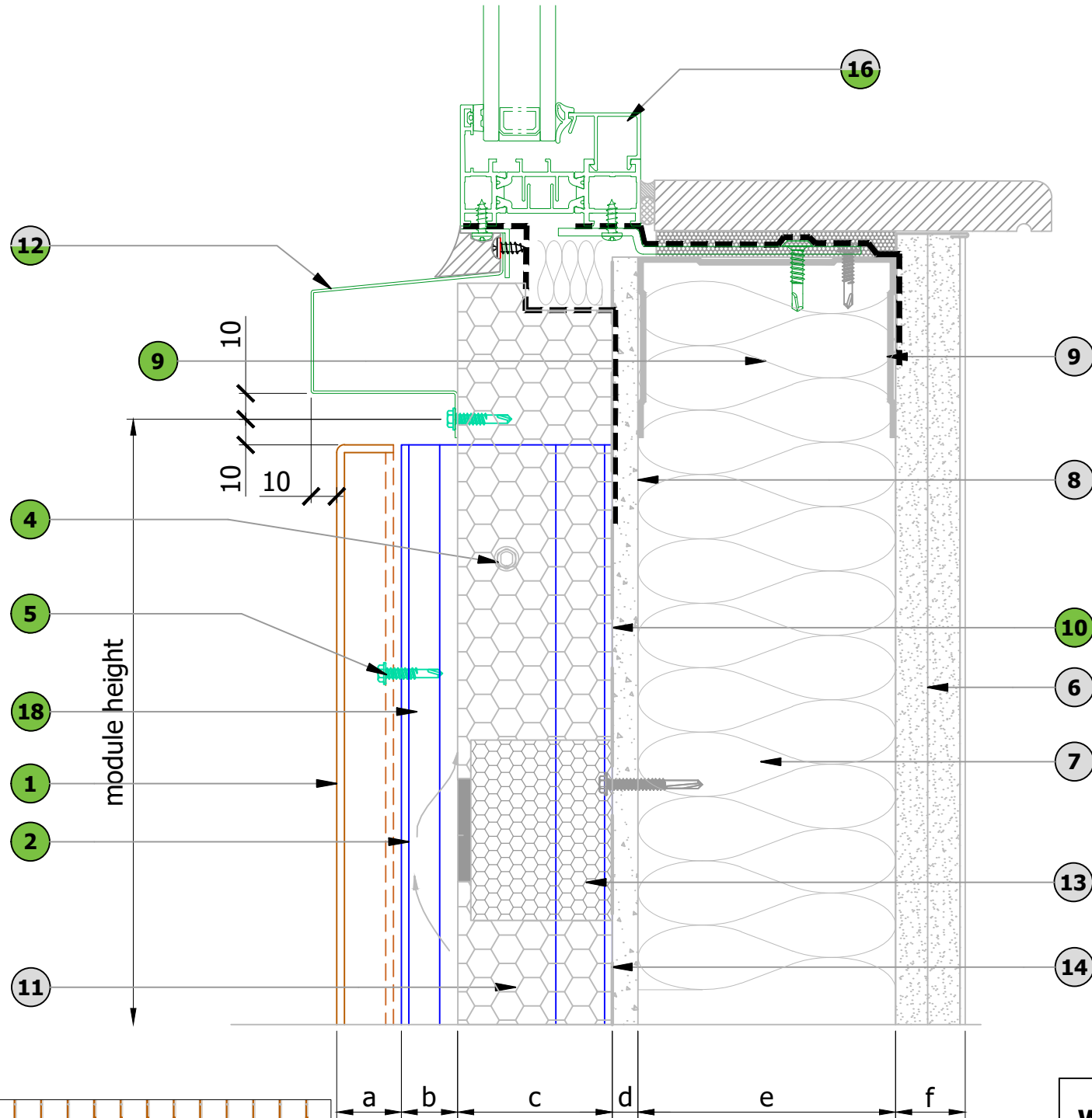
A	First Issue	15.01.21
Rev	Details	Date
PSP SYSTEM - Matrix DF		
 Unit 11 All Saints Industrial Estate Shildon County Durham DL4 2RD Tel: 00 44 (0) 1388 770490 Fax: 00 44 (0) 1388 778068 Email: design@pspuk.com www.pspuk.com	Client: P.S.P.	
	Project: Matrix DF	
Title: Window Head Detail (Sectional View)		
Drawn by: sns	Date: 15.01.21	Scale: 1:2 @ A3
Drwg. No.:	Status:	Approved
PSP-DF-S04	Revision:	A

DO NOT SCALE

IF IN DOUBT - ASK

PARTS LIST

1	Aluminium panel skin, Varies
2	Aluminium carrier angles, 3mm thick
3	Stainless steel fixing (By Others)
4	JT4-4-4.8x19 Stainless steel fixing
5	JT4-6-5.5x22 A14 Stainless steel fixing
6	Internal boards (By Others)
7	Insulation (By Others)
8	Cement particle board (By Others)
9	SFS support structure (By Others)
10	Breather membrane (By Others)
11	Additional rigid sheet insulation if required (By Others)
12	Optional Aluminium Flashing
13	Fire/Smoke Barrier and fittings (by Others) - Refer to specialist
14	EPDM (By Others)
15	Thermally Broken Aluminium Profile
16	Adjacent Window / Door Profile
17	External Corner Flashing
18	Fixing Bracket



Refer to Specialist recommendation for all Smoke and Fire protection.

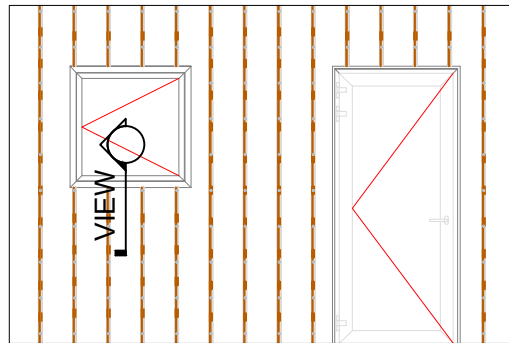
***Caution fire barriers are to be considered.**

LEGEND:

N →	part of system, provided by PSP
N →	not part of system, can be provided by PSP
N →	provided by others


WINDOW CILL DETAIL

LEGEND	
a	PSP Panel thickness - Varies
b	Ventilated cavity (British standard - 25mm, NHBC - 38mm (baffled joints) and 50mm (open joints))
c	Insulation by others (must be Part B Compliant)
d	CP board by others - thickness established by project specification
e	SFS by others - depth established by project specification
f	Internal finishes by others



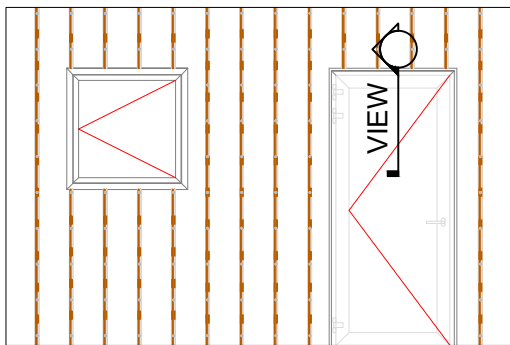
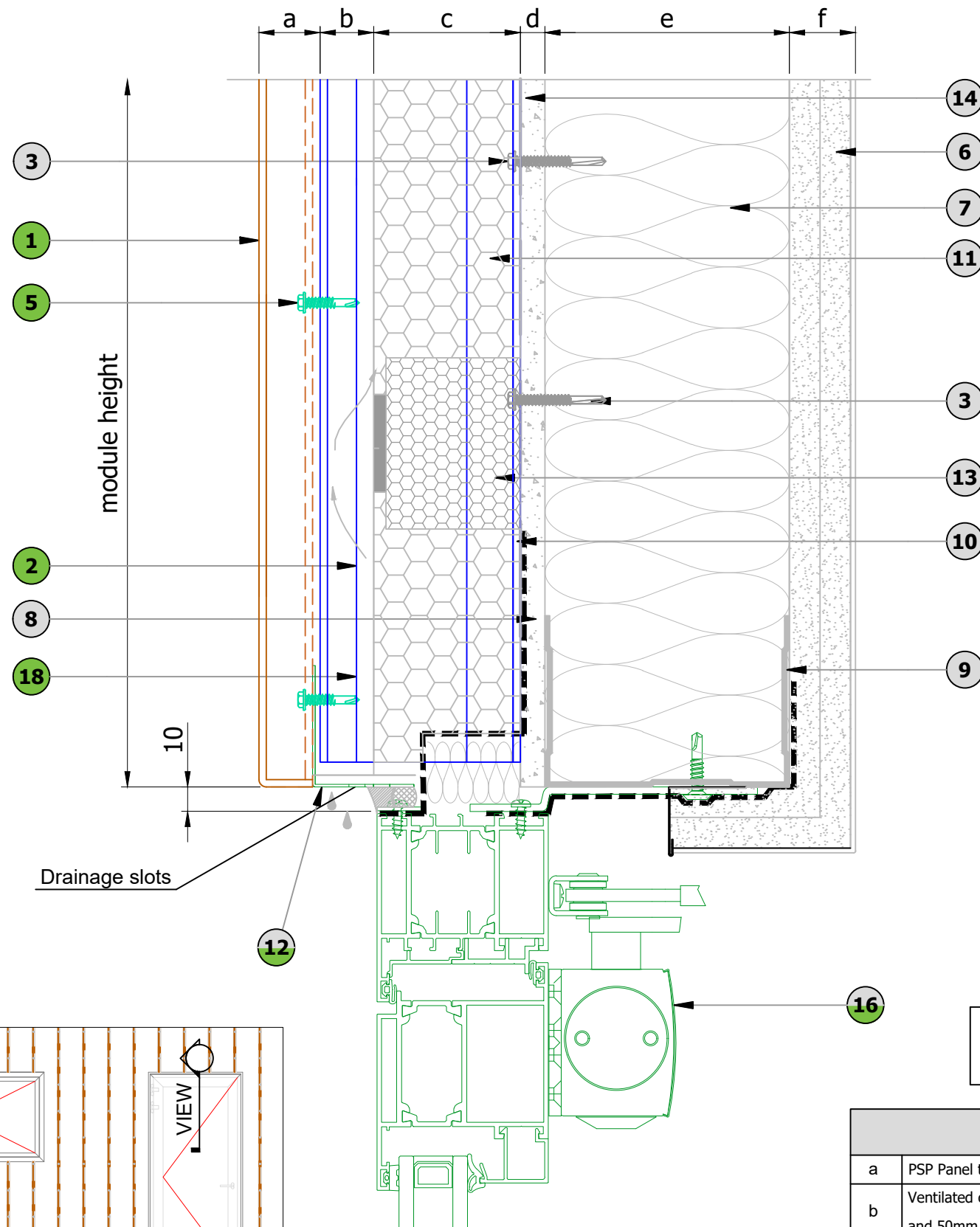
Location Drawing

Details are for indicative purposes only, it is the responsibility of the installer / designer to ensure the specification compliance for each project, PSP will not be held responsible for any project non conformities.

A	First Issue	15.01.21
Rev	Details	Date
PSP SYSTEM - Matrix DF		
 Unit 11 All Saints Industrial Estate Shildon County Durham DL4 2RD Tel: 00 44 (0) 1388 770490 Fax: 00 44 (0) 1388 778068 Email: design@pspuk.com www.pspuk.com	Client: P.S.P.	
	Project: Matrix DF	
	Title: Window Base Detail 2 (Sectional View)	
Drawn by: sns	Date: 15.01.21	Scale: 1:2 @ A3
Drwg. No.: PSP-DF-S05	Status: Approved	Revision: A

DO NOT SCALE

IF IN DOUBT - ASK



Location Drawing

Details are for indicative purposes only, it is the responsibility of the installer / designer to ensure the specification compliance for each project, PSP will not be held responsible for any project non conformities.

PARTS LIST

1	Aluminium panel skin, Varies
2	Aluminium carrier angles, 3mm thick
3	Stainless steel fixing (By Others)
4	JT4-4-4.8x19 Stainless steel fixing
5	JT4-6-5.5x22 A14 Stainless steel fixing
6	Internal boards (By Others)
7	Insulation (By Others)
8	Cement particle board (By Others)
9	SFS support structure (By Others)
10	Breather membrane (By Others)
11	Additional rigid sheet insulation if required (By Others)
12	Optional Aluminium Flashing
13	Fire/Smoke Barrier and fittings (by Others) - Refer to specialist
14	EPDM (By Others)
15	Thermally Broken Aluminium Profile
16	Adjacent Window / Door Profile
17	External Corner Flashing
18	Fixing Bracket

Refer to Specialist recommendation for all Smoke and Fire protection.

***Caution fire barriers are to be considered.**


LEGEND:

N	→	part of system, provided by PSP
N	→	not part of system, can be provided by PSP
N	→	provided by others

DOOR HEAD DETAIL

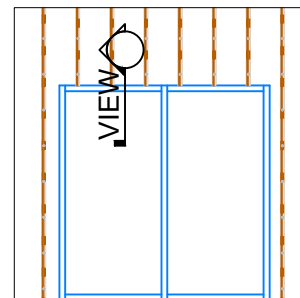
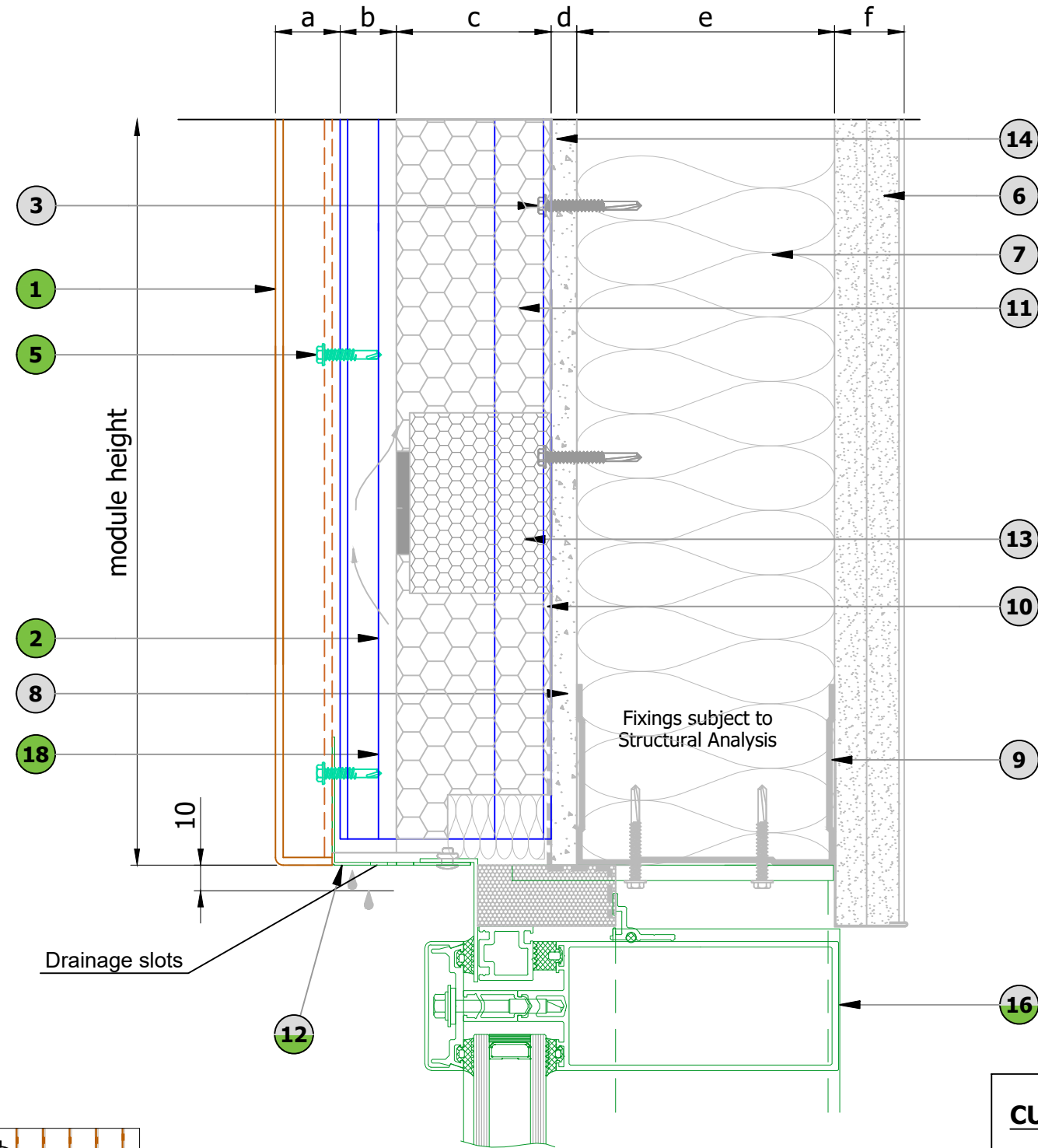
LEGEND

a	PSP Panel thickness - Varies
b	Ventilated cavity (British standard - 25mm, NHBC - 38mm (baffled joints) and 50mm (open joints))
c	Insulation by others (must be Part B Compliant)
d	CP board by others - thickness established by project specification
e	SFS by others - depth established by project specification
f	Internal finishes by others

A	First Issue	15.01.21
Rev	Details	Date
PSP SYSTEM - Matrix DF		
 <p>Unit 11 All Saints Industrial Estate Shildon County Durham DL4 2RD Tel: 00 44 (0) 1388 770490 Fax: 00 44 (0) 1388 778068 Email: design@pspuk.com www.pspuk.com</p>		Client: P.S.P.
		Project: Matrix DF
		Title: Door Head Detail 1 (Sectional View)
Drawn by: sns	Date: 15.01.21	Scale: 1:2 @ A3
Drwg. No.:	Status:	Approved
PSP-DF-S06	Revision:	A

DO NOT SCALE

IF IN DOUBT - ASK



Location Drawing

Details are for indicative purposes only, it is the responsibility of the installer / designer to ensure the specification compliance for each project, PSP will not be held responsible for any project non conformities.

PARTS LIST

1	Aluminium panel skin, Varies
2	Aluminium carrier angles, 3mm thick
3	Stainless steel fixing (By Others)
4	JT4-4-4.8x19 Stainless steel fixing
5	JT4-6-5.5x22 A14 Stainless steel fixing
6	Internal boards (By Others)
7	Insulation (By Others)
8	Cement particle board (By Others)
9	SFS support structure (By Others)
10	Breather membrane (By Others)
11	Additional rigid sheet insulation if required (By Others)
12	Optional Aluminium Flashing
13	Fire/Smoke Barrier and fittings (by Others) - Refer to specialist
14	EPDM (By Others)
15	Thermally Broken Aluminium Profile
16	Adjacent Window / Door Profile
17	External Corner Flashing
18	Fixing Bracket

Refer to Specialist recommendation for all Smoke and Fire protection.

*Caution fire barriers are to be considered.

LEGEND:

- N → part of system, provided by PSP
- N → not part of system, can be provided by PSP
- N → provided by others

CURTAIN WALL HEAD DETAIL

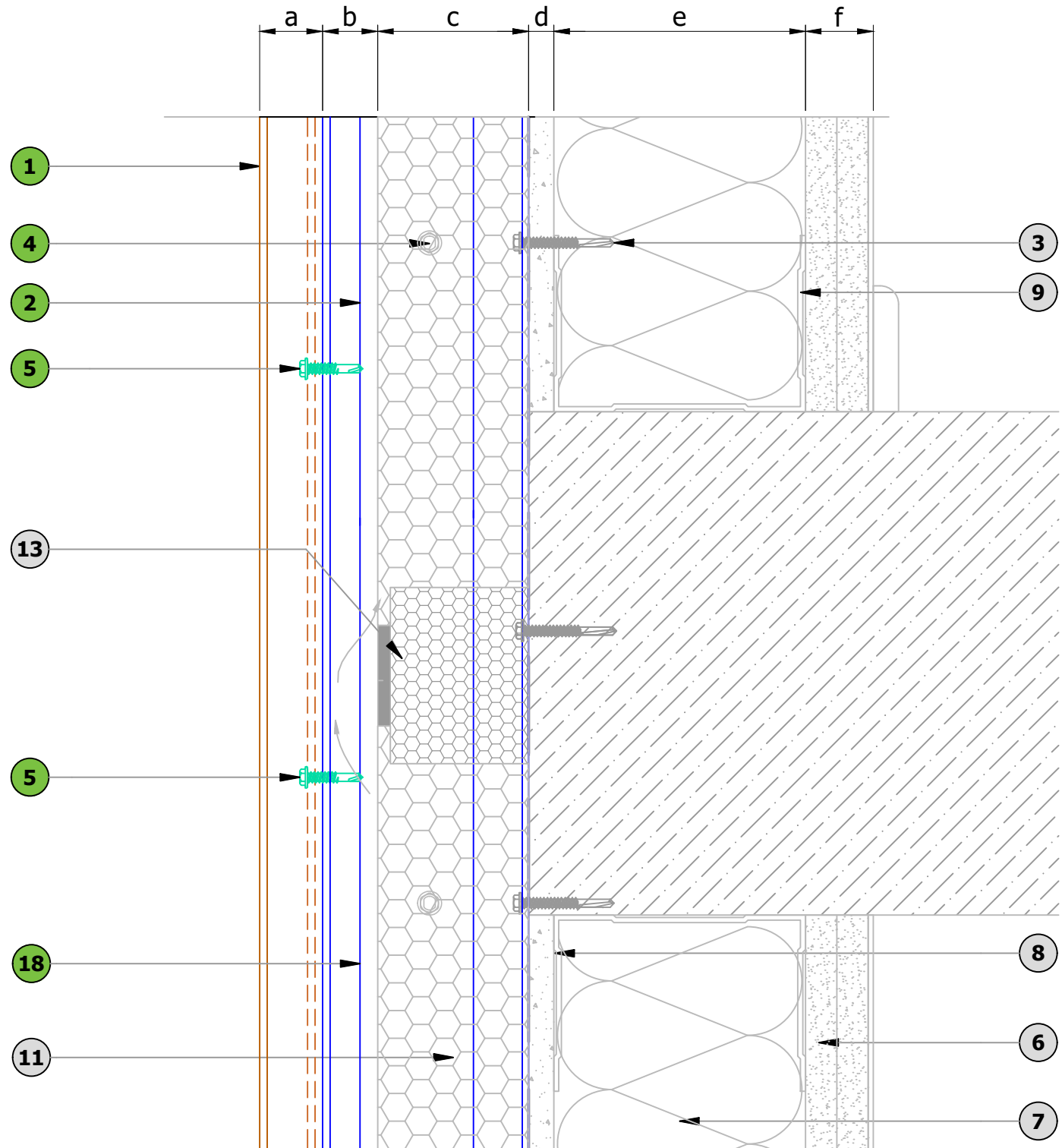
LEGEND

a	PSP Panel thickness - Varies
b	Ventilated cavity (British standard - 25mm, NHBC - 38mm (baffled joints) and 50mm (open joints))
c	Insulation by others (must be Part B Compliant)
d	CP board by others - thickness established by project specification
e	SFS by others - depth established by project specification
f	Internal finishes by others

A	First Issue	15.01.21
Rev	Details	Date
PSP SYSTEM - Matrix DF		
Unit 11 All Saints Industrial Estate Shildon County Durham DL4 2RD Tel: 00 44 (0) 1388 770490 Fax: 00 44 (0) 1388 778068 Email: design@pspuk.com www.pspuk.com		Client: P.S.P.
		Project: Matrix DF
		Title: Curtain Walling Head Detail (Sectional View)
Drawn by: sns	Date: 15.01.21	Scale: 1:2 @ A3
Drwg. No.:	Status:	Approved
PSP-DF-S07	Revision:	A

DO NOT SCALE

IF IN DOUBT - ASK



PARTS LIST

1	Aluminium panel skin, Varies
2	Aluminium carrier angles, 3mm thick
3	Stainless steel fixing (By Others)
4	JT4-4-4.8x19 Stainless steel fixing
5	JT4-6-5.5x22 A14 Stainless steel fixing
6	Internal boards (By Others)
7	Insulation (By Others)
8	Cement particle board (By Others)
9	SFS support structure (By Others)
10	Breather membrane (By Others)
11	Additional rigid sheet insulation if required (By Others)
12	Optional Aluminium Flashing
13	Fire/Smoke Barrier and fittings (by Others) - Refer to specialist
14	EPDM (By Others)
15	Thermally Broken Aluminium Profile
16	Adjacent Window / Door Profile
17	External Corner Flashing
18	Fixing Bracket

Refer to Specialist recommendation for all Smoke and Fire protection.

*Caution fire barriers are to be considered.

LEGEND:


- N → part of system, provided by PSP
- N → not part of system, can be provided by PSP
- N → provided by others

FIRE BARRIERS DETAIL

LEGEND

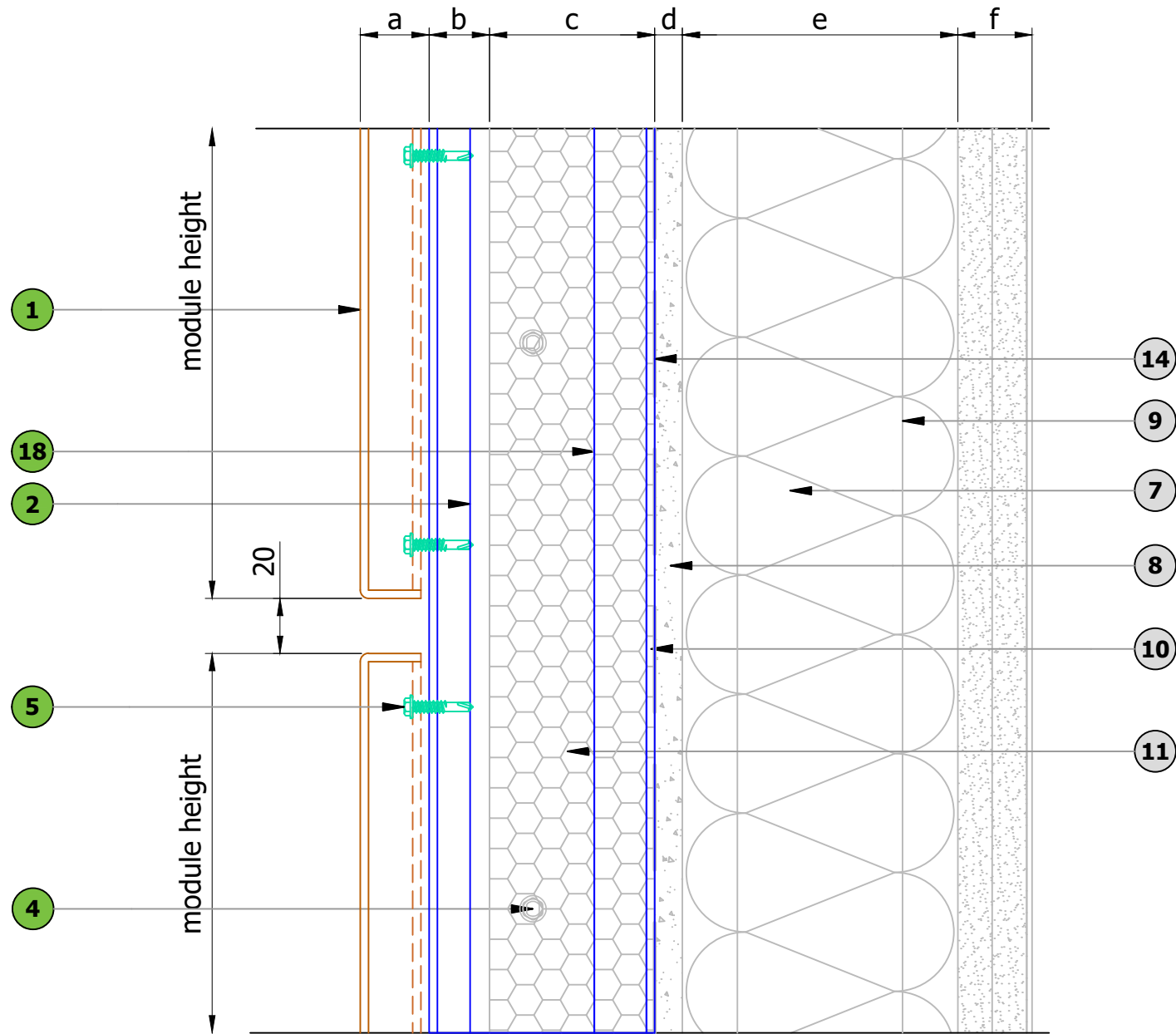
a	PSP Panel thickness - Varies
b	Ventilated cavity (British standard - 25mm, NHBC - 38mm (baffled joints) and 50mm (open joints))
c	Insulation by others (must be Part B Compliant)
d	CP board by others - thickness established by project specification
e	SFS by others - depth established by project specification
f	Internal finishes by others

Details are for indicative purposes only, it is the responsibility of the installer / designer to ensure the specification compliance for each project, PSP will not be held responsible for any project non conformities.

A	First Issue	15.01.21
Rev	Details	Date
PSP SYSTEM - Matrix DF		
 <p>Unit 11 All Saints Industrial Estate Shildon County Durham DL4 2RD Tel: 00 44 (0) 1388 770490 Fax: 00 44 (0) 1388 778068 Email: design@pspuk.com www.pspuk.com</p>		Client: P.S.P.
		Project: Matrix DF
<p>Drawn by: sns Date: 15.01.21 Scale: 1:2 @ A3</p>		Title: Fire Barrier Detail (Sectional View)
Drwg. No.:	PSP-DF-S08	Status: Approved
Revision:	A	

DO NOT SCALE




IF IN DOUBT - ASK



PARTS LIST	
1	Aluminium panel skin, Varies
2	Aluminium carrier angles, 3mm thick
3	Stainless steel fixing (By Others)
4	JT4-4-4.8x19 Stainless steel fixing
5	JT4-6-5.5x22 A14 Stainless steel fixing
6	Internal boards (By Others)
7	Insulation (By Others)
8	Cement particle board (By Others)
9	SFS support structure (By Others)
10	Breather membrane (By Others)
11	Additional rigid sheet insulation if required (By Others)
12	Optional Aluminium Flashing
13	Fire/Smoke Barrier and fittings (by Others) - Refer to specialist
14	EPDM (By Others)
15	Thermally Broken Aluminium Profile
16	Adjacent Window / Door Profile
17	External Corner Flashing
18	Fixing Bracket


Refer to Specialist recommendation for all Smoke and Fire protection.

***Caution fire barriers are to be considered.**

LEGEND:	
	part of system, provided by PSP
	not part of system, can be provided by PSP
	provided by others

LEGEND	
a	PSP Panel thickness - Varies
b	Ventilated cavity (British standard - 25mm, NHBC - 38mm (baffled joints) and 50mm (open joints))
c	Insulation by others (must be Part B Compliant)
d	CP board by others - thickness established by project specification
e	SFS by others - depth established by project specification
f	Internal finishes by others

Details are for indicative purposes only, it is the responsibility of the installer / designer to ensure the specification compliance for each project, PSP will not be held responsible for any project non conformities.

A	First Issue	15.01.21
Rev	Details	Date
PSP SYSTEM - Matrix DF		
 Unit 11 All Saints Industrial Estate Shildon County Durham DL4 2RD Tel: 00 44 (0) 1388 770490 Fax: 00 44 (0) 1388 778068 Email: design@pspuk.com www.pspuk.com	Client: P.S.P.	
	Project: Matrix DF	
	Title: Removal Panel Joint Detail (Sectional View)	
Drawn by: sns	Date: 15.01.21	Scale: 1:2 @ A3
Drwg. No.: PSP-DF-S09	Status: Approved	Revision: A