



Quilley School of Engineering - Eastleigh Hampshire

PSP Architectural were a supply chain partner for the Quilley School of Engineering project in Eastleigh and manufactured bespoke decorative cladding panels from their Matrix Mosaic range to create solar shading for the building.

ARCHITECT

HCC Property Services

CONTRACTOR/DEVELOPER

Morgan Sindall

PSP CLIENT

Façade Concepts

PSP SYSTEM

Matrix Mosaic - Bespoke Cladding

www.pspuk.com

Quilley School of Engineering

Utilising specialist machinery, PSP produced bespoke decorative cladding panels to create solar shading. The design incorporated customised patterns and perforations to suit clients exacting requirements.

PROJECT DETAIL

Quilley School was originally built in 1963 in an era where affordable and quick building methods were required to meet the exceptional demands of educational expansion programmes. Unfortunately, many of these buildings have not stood the test of time due to poor design and insulation resulting in high energy consumption.

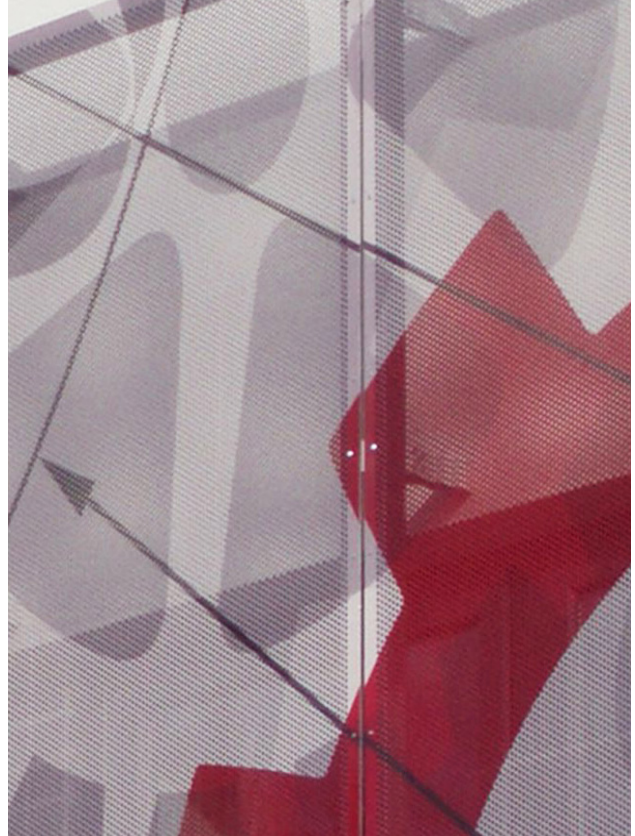
Hampshire County Council identified Quilley School of Engineering as one of the facilities in need of modernisation and as the structure was not built to standards, new cladding provided the optimum remedial solution.

A new cladding system was designed to meet modern building standards and reduce the buildings carbon footprint and PSP Architectural was invited to join the supply chain to produce the decorative cladding panels to sit proudly on the new external envelope.

To create stand out and appeal, PSP produced customised panels utilising specialist machinery, which included patterns and perforations which depicted the building's use and occupants within.

The Matrix Mosaic panels were used as they offer personalisation to external cladding and this was achieved by working with the project architect and transforming their DWG files into a custom-made solution.

It was essential that the cladding panels not only provided insulation but also solar shading to reduce glare whilst also looking aesthetically appealing. This was



easily achieved as the Matrix Mosaic system is available in a range of finishes and thicknesses and any colour combinations.

The bespoke panels were produced in large format modular grids for ease of installation in PSP Architectural's 45,000ft² state-of-the-art manufacturing facility located in Shildon, County Durham.

Matrix Mosaic can be manufactured from numerous non-combustible materials and finishes guaranteeing the external envelope is compliant and safe but also achieves the clients exacting requirements.

'The whole block has been completely transformed, such that staff and students are now working in a modern, safe, energy and maintenance efficient building. The whole refurbishment process was worth the minimal disruption that was caused.'

MARK WESTLAKE
BUSINESS MANAGER QUILLEY SCHOOL

PSP Architectural

Unit 11 | All Saints Industrial Estate
Shildon | County Durham | DL4 2RD
T: 01388 770490

www.pspuk.com

